

## Recent Home Sale: 5610 WISCONSIN AVE #PH-5C - \$1,500,000



**Remarks** Luxury awaits you in this expansive 21st-floor penthouse condo with a spectacular balcony view! Feel secure with a manned gatehouse, doorman, and 24/7 concierge. Enter the unit and your attention is immediately drawn to the grand living room with a striking view of the city that beckons you through the sliding doors. Access this breathtaking outdoor space from the kitchen, dining room, office and master bedroom as well. Pause at the mahogany, marble-countered wet bar to pour a drink, then continue to the kitchen, which feels like an island getaway in the middle of the city. High-end stainless steel appliances include a Viking fridge, built-in microwave, and six-burner flat cooktop. A table by the door offers a picturesque view during meals, or dine al fresco in warmer months. There is a separate dining room for more formal meals, as well as a laundry room, guest room with full bath adorned with marble floors, and so many large walk-in closets, you'll never worry about storage space. Off of the living room you'll find a magnificent cherry-wood office with built-in custom shelving and the finest decorative flair, including hand-carved moldings of Asian dragons and a clamshell design. Frosted glass doors hide digital equipment. A powder room and exquisite master suite complete this home. Close to award-winning schools in the heart of Chevy Chase, with multiple community amenities, this sought-after address provides the lavish lifestyle you seek.

Rooms	Total	Main
Bedrooms	2	2
Full Baths	2	2
Half Baths	1	1

### Basic Information

**Address** 5610 WISCONSIN AVE #PH-5C  
**City/Town** CHEVY CHASE  
**State** MD  
**Zip Code** 20815  
**County** MONTGOMERY  
**Type** Penthouse Unit/Flat/Apartment  
**MLS#** MDMC561038

**Ownership** Condominium  
**Style** Unit/Flat, Contemporary  
**Adv Subdivision** SOMERSET HOUSE 2  
**DOM-Prop** 264  
**Year Built** 1990  
**Beds** 2  
**Baths** 2/1

**Tax Living Area** 2,770  
**Levels** 1  
**Total Fin Sq Ft** 2,500  
**Contract Date** 2019-10-28  
**Close Date** 2019-11-26  
**Close Price** \$1,500,000

### Exterior/Construction Features/Utilities

**Exterior** Other  
**Roof** Composite  
**Water Type** Public  
**Sewer** Public Sewer

**Hot Water** Multi-tank  
**Heating** Forced Air, Heat Pump(s)  
**Cooling** Central A/C  
**Garage Spaces** 2.00

**Parking** Parking Space Conveys  
**Porch/Patio** Balcony  
**Other Features** Exterior Lighting, Sidewalks

### Tax/Legal Information

**Tax ID #** 160702886238  
**Tax Year** 2019  
**Tax Assessment Value** \$1,803,333

**Total Taxes** \$21,201  
**Legal Subdiv** SOMERSET HOUSE 2 CODM  
**County Tax** \$21,171

**Short Sale** No  
**Foreclosure** No  
**REO/Bank Owned** No



**CIMENT & SHIELDS TEAM**

**Barbara Ciment, Associate Broker**



**(C) 301-346-9126 (O) 301-424-0900**  
**barbara@ciment.com www.ciment.com**



## Recent Home Sale: 5610 WISCONSIN AVE #PH-5C - \$1,500,000

### Interior Features/Amenities

**Appliances** Built-In Microwave, Built-In Range, Dishwasher, Disposal, Icemaker, Oven - Wall, Six Burner Stove, Stainless Steel Appliances

**Int. Style** Bar, Breakfast Area, Carpet, Crown Moldings, Entry Level Bedroom, Exposed Beams, Formal/Separate Dining Room, Kitchen - Eat-In, Kitchen - Galley, Kitchen - Table Space, Primary Bath(s), Pantry, Recessed Lighting, Walk-in Closet(s), Wet/Dry Bar, Built-Ins, Dining Area, Flat, Floor Plan - Traditional

**Doors** Sliding Glass

**Windows** Double Pane, Insulated

**Wall/Ceiling** Dry Wall, Other

**Security** 24 hour security, Doorman, Desk in Lobby, Main Entrance Lock, Monitored, Security Gate

**TV/Cable** Cable TV

**Garage** Inside Access

### HOA/Condo/Coop Info

**Condo/Coop Fee** \$2,516

**Amenities** Basketball Courts, Billiard Room, Common Grounds, Community Center, Exercise Room, Extra Storage, Fitness Center, Gated Community, Party Room, Pool - Indoor, Pool - Outdoor, Sauna, Security, Swimming Pool, Tennis Courts

**Project Name** SOMERSET HOUSE 2

Information Courtesy of Long & Foster Real Estate, Inc.. Copyright 2021 Bright MLS. Information is believed to be accurate, but should not be relied upon without verification. Accuracy of square footage, lot size and other information is not guaranteed. This website courtesy of Barbara Ciment, Realtor, Long & Foster Real Estate, Inc.



**CIMENT & SHIELDS TEAM**

**Barbara Ciment, Associate Broker**



(C) 301-346-9126

(O) 301-424-0900

[barbara@ciment.com](mailto:barbara@ciment.com)

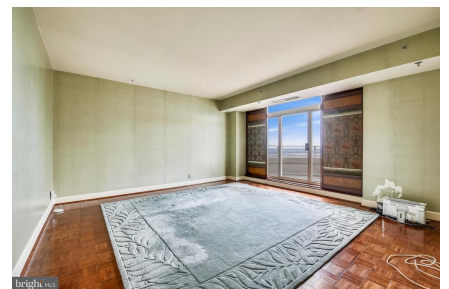
[www.ciment.com](http://www.ciment.com)









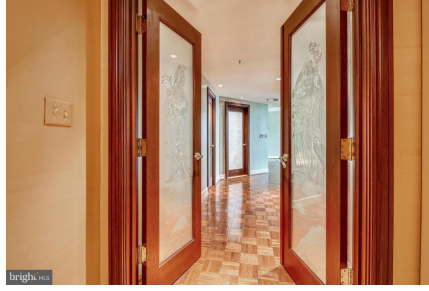


**CIMENT & SHIELDS TEAM**

**Barbara Ciment, Associate Broker**  
**LONG & FOSTER REAL ESTATE**  
REALTOR® EQUAL HOUSING OPPORTUNITY  
(C) 301-346-9126 (O) 301-424-0900  
[barbara@ciment.com](mailto:barbara@ciment.com) [www.ciment.com](http://www.ciment.com)







**CIMENT & SHIELDS TEAM**

**Barbara Ciment, Associate Broker**

**LONG & FOSTER REAL ESTATE**

(C) 301-346-9126

(O) 301-424-0900

[barbara@ciment.com](mailto:barbara@ciment.com)

[www.ciment.com](http://www.ciment.com)

