

: -



**Remarks**

Rooms	Total
Bedrooms	
Full Baths	
Half Baths	

**Basic Information**

Lot Size 0

Acres 0

Tax Living Area 0

**Tax/Legal Information**

Tax ID #

Foreclosure No

Short Sale No

REO/Bank Owned No

Information Courtesy of . Copyright 2021 Bright MLS. Information is believed to be accurate, but should not be relied upon without verification. Accuracy of square footage, lot size and other information is not guaranteed. This website courtesy of Barbara Ciment, Realtor, Long & Foster Real Estate, Inc.



**Barbara Ciment, Associate Broker**



(C) 301-346-9126

(O) 301-424-0900

[barbara@ciment.com](mailto:barbara@ciment.com)

[www.ciment.com](http://www.ciment.com)

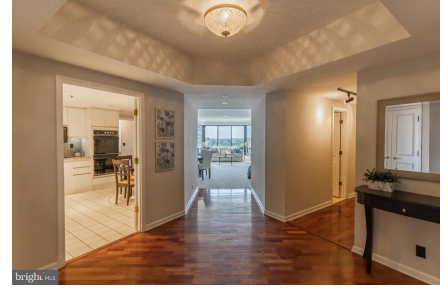




Somerset House I



Somerset House I



Foyer entry with hardwood floors



Huge living room and dining room



Huge living room and dining room



Beautiful tree & sky views



Huge living room and dining room



Huge living room and dining room



Huge living room and dining room



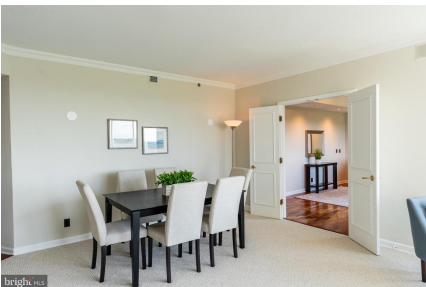
Huge living room and dining room



Huge living room and dining room



Huge living room and dining room



Huge living room and dining room



Bright and sunny den with hardwood floors



Bright and sunny den with hardwood floors



CIMENT & SHIELDS TEAM

Barbara Ciment, Associate Broker

LONG & FOSTER REAL ESTATE

(C) 301-346-9126

(O) 301-424-0900

barbara@ciment.com

www.ciment.com





Bright and sunny den with hardwood floors



Spacious kitchen with granite countertops



Kitchen with breakfast area



Kitchen with breakfast area



Kitchen with breakfast area



Kitchen with breakfast area



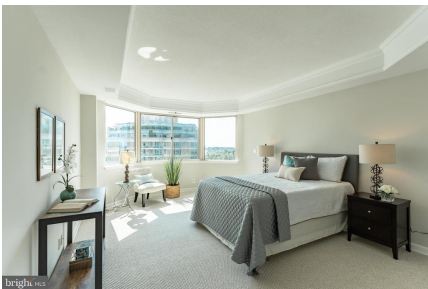
Foyer leading to the half bath and bedroom suites



Half bath



Master foyer with closets



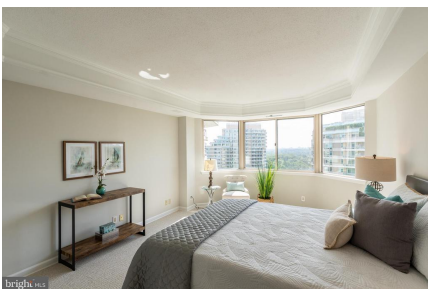
Master bedroom suite



Master bedroom suite



Master bedroom suite



Master bedroom suite



Master bath with custom wood, dual sink vanity



Master bath with custom wood, dual sink vanity



**CIMENT & SHIELDS TEAM**

**Barbara Ciment, Associate Broker**

**LONG & FOSTER REAL ESTATE**

(C) 301-346-9126

(O) 301-424-0900

barbara@ciment.com

www.ciment.com





Master suite WIC w/ built in shelves and drawers



Second bedroom suite



Second bedroom suite



Second bedroom suite with LR & hall access



Second bedroom en-suite bath



Laundry room with full size washer and dryer



Somerset gardens



Tennis



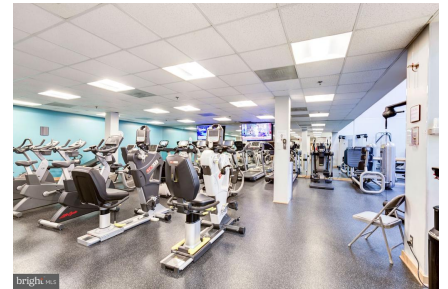
Clubhouse



Indoor pool



Outdoor pool



Exercise room



**CIMENT & SHIELDS TEAM**

**Barbara Ciment, Associate Broker**

**LONG & FOSTER REAL ESTATE**

(C) 301-346-9126

(O) 301-424-0900

[barbara@ciment.com](mailto:barbara@ciment.com)

[www.ciment.com](http://www.ciment.com)

