

: -



Remarks

Rooms	Total
Bedrooms	
Full Baths	
Half Baths	

Basic Information

Lot Size 0

Acres 0

Tax Living Area 0

Tax/Legal Information

Tax ID #

Foreclosure No

Short Sale No

REO/Bank Owned No

Information Courtesy of . Copyright 2021 Bright MLS. Information is believed to be accurate, but should not be relied upon without verification. Accuracy of square footage, lot size and other information is not guaranteed. This website courtesy of Barbara Ciment, Realtor, Long & Foster Real Estate, Inc.



Barbara Ciment, Associate Broker



(C) 301-346-9126

(O) 301-424-0900

barbara@ciment.com

www.ciment.com





Living Room



Living Room



Living Room



Living Room



Living Room



Great View on Page Park



Living Room



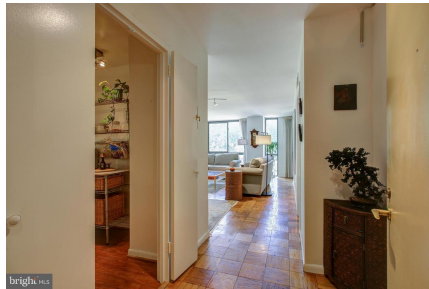
Living Room



Dining Room



Living Room



Entrance



Bedroom



Bedroom



Bath



Kitchen



CIMENT & SHIELDS TEAM

Barbara Ciment, Associate Broker

LONG & FOSTER REAL ESTATE

(C) 301-346-9126

(O) 301-424-0900

barbara@ciment.com

www.ciment.com





Kitchen



Kitchen



Bedroom



Bedroom



Walk-in Closet



Bathroom



Luxury Building - Great Amenities



Exterior



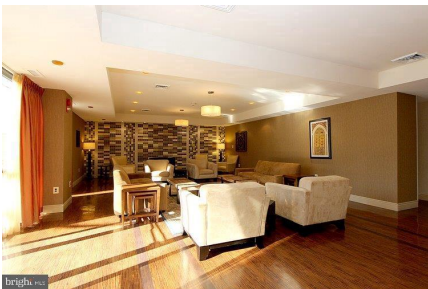
Exterior



Lobby



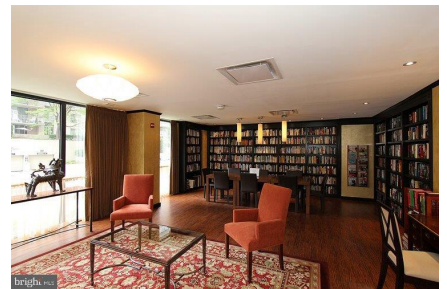
Lobby



Party Room



Party Room



Library



CIMENT & SHIELDS TEAM

Barbara Ciment, Associate Broker

LONG & FOSTER REAL ESTATE

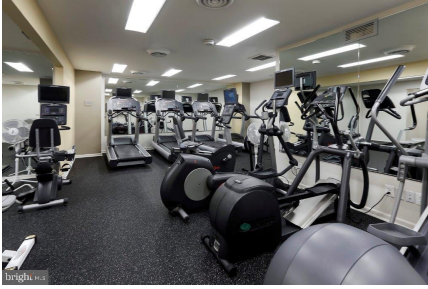
(C) 301-346-9126

(O) 301-424-0900

barbara@ciment.com

www.ciment.com





Fitness Center



Sauna



Patio



Swimming Pool



Swimming Pool



Patio



Patio



Patio



Friendship Heights



Short Walk to Metro



Friendship Heights



Friendship Heights



Friendship Heights



Friendship Heights



Friendship Heights



CIMENT & SHIELDS TEAM

Barbara Ciment, Associate Broker

LONG & FOSTER REAL ESTATE

(C) 301-346-9126

(O) 301-424-0900

barbara@ciment.com

www.ciment.com





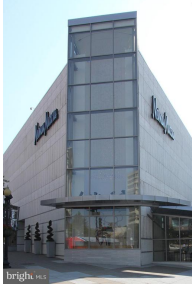
Friendship Heights



Wonderful Friendship Heights



Friendship Heights



Friendship Heights



Friendship Heights



Friendship Heights



Friendship Heights



Friendship Heights



CIMENT & SHIELDS TEAM

Barbara Ciment, Associate Broker

LONG & FOSTER REAL ESTATE

(C) 301-346-9126

(O) 301-424-0900

barbara@ciment.com

www.ciment.com

