

: -



Remarks

Rooms	Total
Bedrooms	
Full Baths	
Half Baths	

Basic Information

Lot Size 0

Acres 0

Tax Living Area 0

Tax/Legal Information

Tax ID #

Foreclosure No

Short Sale No

REO/Bank Owned No

Information Courtesy of . Copyright 2021 Bright MLS. Information is believed to be accurate, but should not be relied upon without verification. Accuracy of square footage, lot size and other information is not guaranteed. This website courtesy of Barbara Ciment, Realtor, Long & Foster Real Estate, Inc.



Barbara Ciment, Associate Broker



(C) 301-346-9126

(O) 301-424-0900

barbara@ciment.com

www.ciment.com





Virtual Staging to show you the potential!



Virtual Staging



Virtual Staging



Virtual Staging



Virtual Staging



All New Appliances



New New & New



New Washer and Dryer in unit



Refinished Oak Cabinets - Unique and Stylish



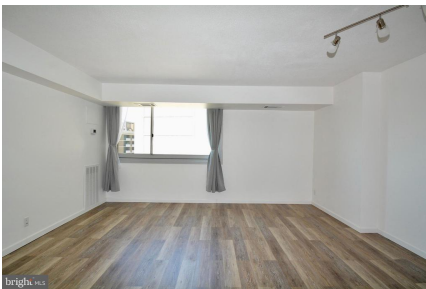
Bedroom



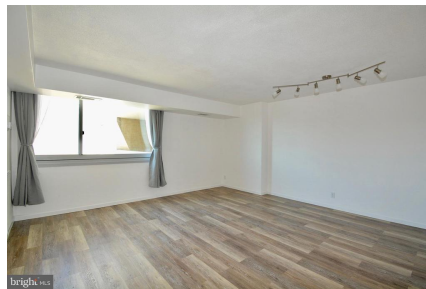
Updated Full Bath off the Bedroom



New Drapes too!



Light Filled Living Room



New Track Lighting



CIMENT & SHIELDS TEAM

Barbara Ciment, Associate Broker

LONG & FOSTER REAL ESTATE

(C) 301-346-9126

(O) 301-424-0900

barbara@ciment.com

www.ciment.com





New Floors, Refinished Walls and Fresh Paint



Walk in Closet and another closet with Shelves



One of many Common Areas



The Grandeur - The Elizabeth Condominiums



Spacious Driveway



One of many Common Areas



Welcoming Lobby



Concierge Desk



Common Social Areas



Common use Library



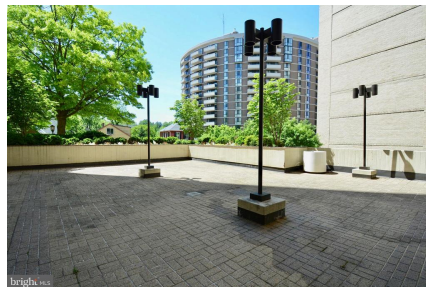
Common Sitting Areas



Visit with your neighbors in the Common Areas



Business Center



Patio outside the Common Social Areas



Retail and Professional Offices



CIMENT & SHIELDS TEAM

Barbara Ciment, Associate Broker

LONG & FOSTER REAL ESTATE

(C) 301-346-9126

(O) 301-424-0900

barbara@ciment.com

www.ciment.com





Deli and Market for your convenience



Common Area - Fitness Center



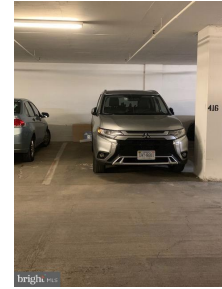
Second Fitness Area



Common Area - Sauna



Sauna



P416 - Garage parking Near the elevator



Party Room to host your guests



CIMENT & SHIELDS TEAM

Barbara Ciment, Associate Broker

LONG & FOSTER REAL ESTATE

(C) 301-346-9126

(O) 301-424-0900

barbara@ciment.com

www.ciment.com

