

## Recent Home Sale: 4550 N PARK AVE #610 - \$1,200,000



**Remarks** PRICE IMPROVEMENT-This is a rare opportunity to create a dream home in a 2096 SF condo in the Carleton of Chevy Chase at a reduced price. The unit welcomes creative touches, so invite your interior designer to help you visualize the possibilities for entertaining, living and relaxing in this rarely available large property. The spacious floor plan features an owner's suite with sitting area, his and hers walk-in closets, a second bedroom, a den that can be a guest room, game room or library, two full bathrooms, a powder room, multiple walk-in closets, beautiful built-ins throughout, full size washer and dryer, kitchen with lovely breakfast room, dining room, living room, a sunny wrap-around balcony with great views, two assigned garage spaces, storage, new balcony door and new windows throughout. Building amenities include a fitness center with locker room, shower and sauna, heated outdoor swimming pool, party room, lending library, card room, fiber optic TV reception, front doorman, and 24/7 front desk concierge. Steps to the Metro, shops and restaurants. Pets welcome. This property is an incredible value. Show us your design talent and we will show you what great value and opportunity we have for you. Don't miss it.

Rooms	Total	Main
Bedrooms	2	2
Full Baths	2	2
Half Baths	1	1

### Basic Information

**Address** 4550 N PARK AVE #610  
**City/Town** CHEVY CHASE  
**State** MD  
**Zip Code** 20815  
**County** MONTGOMERY  
**Type** Unit/Flat/Apartment  
**MLS#** MDMC683690

**Ownership** Condominium  
**Style** Contemporary  
**Adv Subdivision** FRIENDSHIP HEIGHTS  
**DOM-Prop** 23  
**Year Built** 1982  
**Beds** 2  
**Baths** 2/1

**Tax Living Area** 2,096  
**Levels** 1  
**Total Fin Sq Ft** 2,096  
**Contract Date** 2019-11-13  
**Close Date** 2019-12-27  
**Close Price** \$1,200,000

### Exterior/Construction Features/Utilities

**Exterior** Brick, Concrete  
**Water Type** Public  
**Sewer** Public Sewer

**Heating** Heat Pump(s), Forced Air  
**Cooling** Heat Pump(s), Central A/C  
**Garage Spaces** 2.00

**Parking** Assigned, Parking Space Conveys  
**# Spaces** 2

### Tax/Legal Information

**Tax ID #** 160702226455  
**Tax Year** 2019  
**Tax Assessment Value** \$1,093,333  
**Total Taxes** \$13,845

**Legal Subdiv** THE CARLETON OF CH CH COD  
**County Tax** \$13,342  
**City/Town Taxes** \$484  
**Lot** 8  
**Short Sale** No  
**Foreclosure** No  
**REO/Bank Owned** No

### Interior Features/Amenities

**Garage** Garage Door Opener

### Rooms/Levels/Flooring

**Den** Main



**CIMENT & SHIELDS TEAM**

**Barbara Ciment, Associate Broker**



(C) 301-346-9126 (O) 301-424-0900  
 barbara@ciment.com www.ciment.com



## Recent Home Sale: 4550 N PARK AVE #610 - \$1,200,000

### HOA/Condo/Coop Info

**Condo/Coop Fee** \$1,722

**Amenities** Concierge, Elevator, Exercise Room, Fitness Center, Extra Storage, Library, Meeting Room, Party Room, Pool - Outdoor, Reserved/Assigned Parking, Sauna, Security

**Project Name** THE CARLETON OF CHEVY CHASE

Information Courtesy of Coldwell Banker Realty. Copyright 2021 Bright MLS. Information is believed to be accurate, but should not be relied upon without verification. Accuracy of square footage, lot size and other information is not guaranteed. This website courtesy of Barbara Ciment, Realtor, Long & Foster Real Estate, Inc.



**CIMENT  
& SHIELDS** TEAM

**Barbara Ciment, Associate Broker**



(C) 301-346-9126

(O) 301-424-0900

[barbara@ciment.com](mailto:barbara@ciment.com)

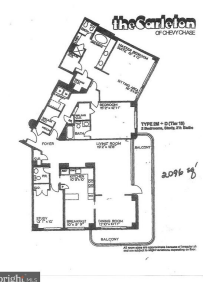
[www.ciment.com](http://www.ciment.com)







Welcome Home



Floor Plan (approximate)



Entrance



Foyer and Living Area



Kitchen



Kitchen



Kitchen



Breakfast Room



Staged Breakfast Room



Living Dining Area



Staged Living Room



Bedroom



Staged Bedroom



Den



Den



**CIMENT & SHIELDS TEAM**

**Barbara Ciment, Associate Broker**

**LONG & FOSTER REAL ESTATE**

(C) 301-346-9126

(O) 301-424-0900

barbara@ciment.com

www.ciment.com







Dining Area



Living/Dining Area



Foyer



Foyer and Dining, Living Area view



Staged Owner's Suite



Master Bath



Walk in Closet



Another Walk in Closet



Powder room



Washer/Dryer in Unit



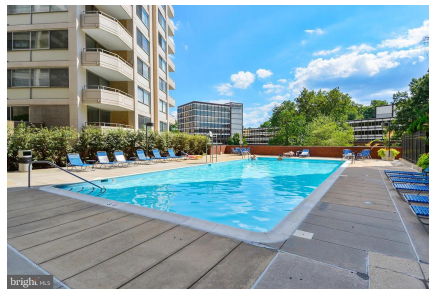
Wrap Around Balcony



The Carleton Lobby



Meeting/Party Room



Outdoor Heated Swimming Pool



Work out in the Fitness Room



**CIMENT & SHIELDS TEAM**

**Barbara Ciment, Associate Broker**

**LONG & FOSTER REAL ESTATE**

(C) 301-346-9126

(O) 301-424-0900

barbara@ciment.com

www.ciment.com





Relax in the Sauna



Friendship Heights Community Center



Nearby Metro Stop



Welcome Home



**CIMENT & SHIELDS TEAM**

**Barbara Ciment, Associate Broker**

**LONG & FOSTER**  
REALTOR® REAL ESTATE

(C) 301-346-9126

(O) 301-424-0900

[barbara@ciment.com](mailto:barbara@ciment.com)

[www.ciment.com](http://www.ciment.com)

