

Recent Home Sale: 4515 WILLARD AVE #2303S - \$797,500



Remarks Welcome to this Award winning Condo featured in Home & Design Magazine by the designer Jennifer Wagner Schmidt of JWS Interiors. This dramatic and open floor plan makes this Condo perfect for both living and entertaining. The elegant marble floor opens to a stylish Living room which flows into a formal Dining room and Kitchen. The huge master suite offers sitting area retreat, office, dream walk-in closets and luxurious master bath. The additional spacious bedrooms and full bath complete this this 1600+ sqf home. The condo was updated with top-of-the-line Hardwood Floors, Interior Doors, Marble Floors, Lightings, California Closets, Bathrooms, Drapes, Paint and more. The inviting oversized marble floor Foyer with California Closet coat system, overlooking the Living Room. LR with large windows and balcony provide the best view of the 4th of July fireworks from the balcony, view of DC and VA mountains. Dining room with one-of-kind crafted Bar & Wine Refrigerator. The Chef Kitchen with Wolf range, Dark Cabinets and mirror back splash is every cook dream kitchen. No details spared in this exceptional bathrooms and 2-3 Bedrooms. Building amenities includes Pool, Gym, library, Sun roof deck, and more. The unit has an Indoor Garage parking.

Rooms	Total	Main
Bedrooms	3	3
Full Baths	2	2
Half Baths		

Basic Information

Address 4515 WILLARD AVE #2303S
City/Town CHEVY CHASE
State MD
Zip Code 20815
County MONTGOMERY
Type Unit/Flat/Apartment
MLS# MDMC670718

Ownership Condominium
Style Transitional
Adv Subdivision WILLOUGHBY OF CHEVY CHASE
DOM-Prop 45
Year Built 1968
Beds 3

Baths 2
Tax Living Area 1,643
Levels 1
Total Fin Sq Ft 1,643
Contract Date 2019-09-02
Close Date 2019-10-31
Close Price \$797,500

Exterior/Construction Features/Utilities

Exterior Brick
Water Type Public
Sewer Public Sewer

Heating Other
Cooling Other
Garage Spaces 1.00

Parking Assigned
Spaces 32

Tax/Legal Information

Tax ID # 160702197044
Tax Year 2019
Tax Assessment Value \$600,000
Total Taxes \$6,874

Legal Subdiv WILLOUGHBY OF CH CH
CODM
County Tax \$6,616
City/Town Taxes \$240

Short Sale No
Foreclosure No
REO/Bank Owned No

Interior Features/Amenities

Appliances Built-In Microwave, Dishwasher, Disposal, Energy Efficient Appliances, ENERGY STAR Refrigerator, Oven/Range - Electric, Stainless Steel Appliances, Six Burner Stove

Int. Style Bar, Built-Ins, Floor Plan - Open, Formal/Separate Dining Room, Kitchen - Gourmet, Upgraded Countertops, Walk-in Closet(s), Window Treatments, Wood Floors, Other

Garage Basement Garage, Garage - Side Entry



CIMENT & SHIELDS TEAM

Barbara Ciment, Associate Broker



(C) 301-346-9126 (O) 301-424-0900
 barbara@ciment.com www.ciment.com



Recent Home Sale: 4515 WILLARD AVE #2303S - \$797,500

HOA/Condo/Coop Info

Condo/Coop Fee \$1,310

Amenities Concierge, Convenience Store, Elevator, Exercise Room, Laundry Facilities, Fitness Center, Party Room, Pool - Outdoor, Security, Swimming Pool

Project Name WILLOUGHBY OF CH

Information Courtesy of Long & Foster Real Estate, Inc.. Copyright 2021 Bright MLS. Information is believed to be accurate, but should not be relied upon without verification. Accuracy of square footage, lot size and other information is not guaranteed. This website courtesy of Barbara Ciment, Realtor, Long & Foster Real Estate, Inc.



**CIMENT
& SHIELDS** TEAM

Barbara Ciment, Associate Broker



(C) 301-346-9126

(O) 301-424-0900

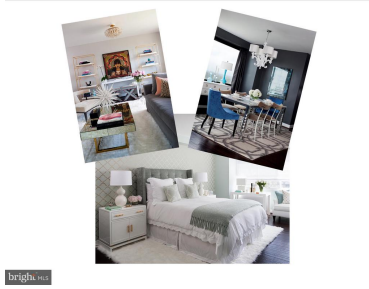
barbara@ciment.com

www.ciment.com

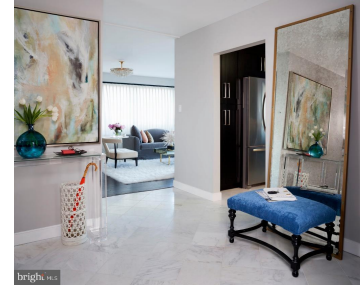




Bright and Sunny Living room



brighthomes



Welcoming Oversize foyer with marble floors



Foyer opens to Living room and Kitchen



Foyers w large California Closet system coat close



Living room with large windows



Living Rm opens to Balcony with views to DC & VA



brighthomes



Kitchen with overlooking Dining Room



Custom Cabinets



Top of the line SS appliances



Chic Dining room with bar



Dining Room



Dining room opens to kitchen



Chic Dining Room with custom HW



CIMENT & SHIELDS TEAM

Barbara Ciment, Associate Broker

LONG & FOSTER REAL ESTATE

(C) 301-346-9126

(O) 301-424-0900

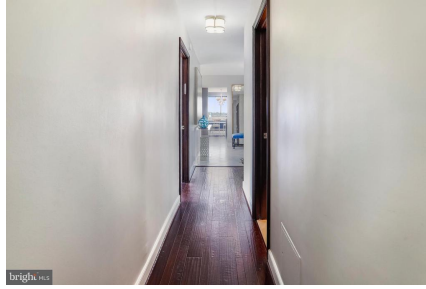
barbara@ciment.com

www.ciment.com





Dining Room with Bar



Custom Hardwood floors and doors



Master Retreat



MB



Master



MB Make-up area



Make-up area in Master



Bedroom-3 or Office



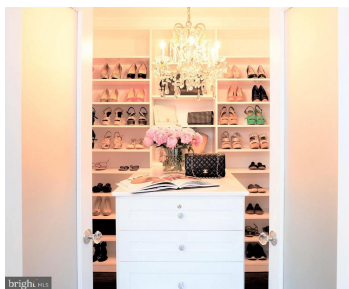
Office



Office



Large Walk-in



Dream Walk-in closet



CIMENT & SHIELDS TEAM

Barbara Ciment, Associate Broker

LONG & FOSTER REAL ESTATE

(C) 301-346-9126

(O) 301-424-0900

barbara@ciment.com

www.ciment.com

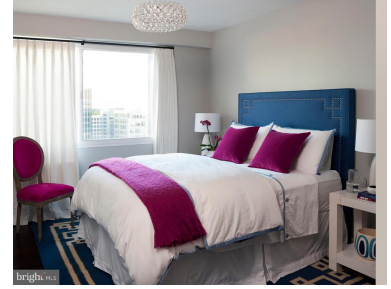




2nd California Walk-in closet in Master BR



State of the art MB Shower



Bedroom-2



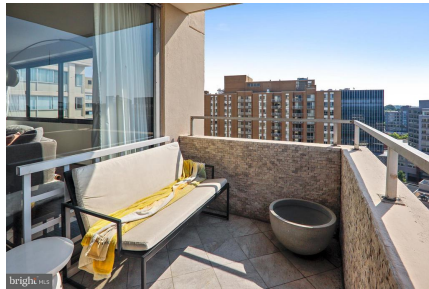
2nd BR



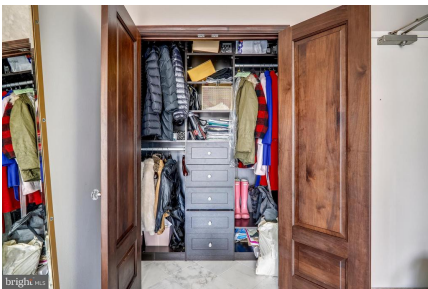
Hall Bath



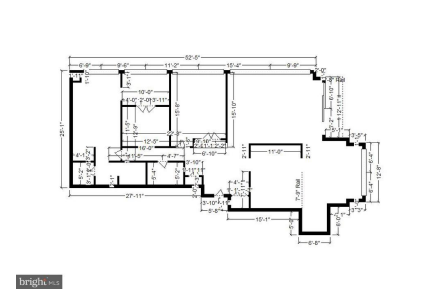
Hall bath



Deeded Parking



California closet system in all closets



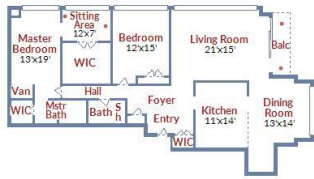
CIMENT & SHIELDS TEAM

Barbara Ciment, Associate Broker

LONG & FOSTER REAL ESTATE

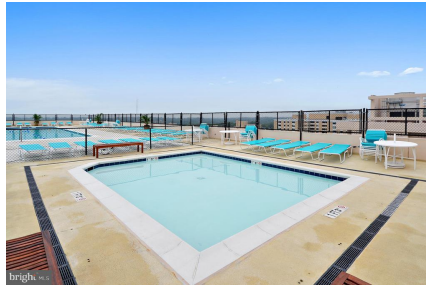
(C) 301-346-9126 (O) 301-424-0900
barbara@ciment.com www.ciment.com



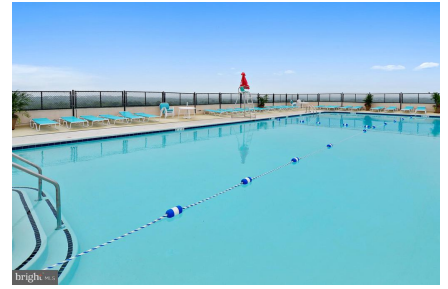


brighthomes

Copyright © TruPlace, Inc.



brighthomes



brighthomes



brighthomes



brighthomes



brighthomes



brighthomes



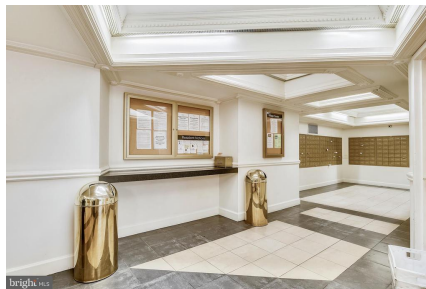
brighthomes



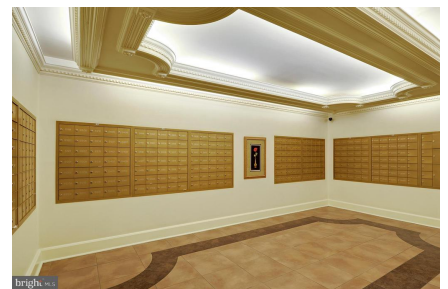
brighthomes



brighthomes



brighthomes



brighthomes



brighthomes



brighthomes



brighthomes



CIMENT & SHIELDS TEAM

Barbara Ciment, Associate Broker

LONG & FOSTER REAL ESTATE

(C) 301-346-9126

(O) 301-424-0900

barbara@ciment.com

www.ciment.com





CIMENT & SHIELDS TEAM

Barbara Ciment, Associate Broker

LONG & FOSTER REAL ESTATE

(C) 301-346-9126

(O) 301-424-0900

barbara@ciment.com

www.ciment.com

