



Remarks

Rooms	Total
Bedrooms	
Full Baths	
Half Baths	

Basic Information

Lot Size 0

Acres 0

Tax Living Area 0

Tax/Legal Information

Tax ID #

Foreclosure No

Short Sale No

REO/Bank Owned No

Information Courtesy of . Copyright 2021 Bright MLS. Information is believed to be accurate, but should not be relied upon without verification. Accuracy of square footage, lot size and other information is not guaranteed. This website courtesy of Barbara Ciment, Realtor, Long & Foster Real Estate, Inc.



Barbara Ciment, Associate Broker



(C) 301-346-9126

(O) 301-424-0900

barbara@ciment.com

www.ciment.com





Grand & Stately hallmark residence of Chevy Chase Impressive residence facing Chevy Chase Club



Exquisite, classic Chevy Chase residence!



Tranquil, curved entry walkway from Hillcrest Pl



Stunning & beautiful



Glorious year-round sunroom



Tranquil rear yard entertaining terrace



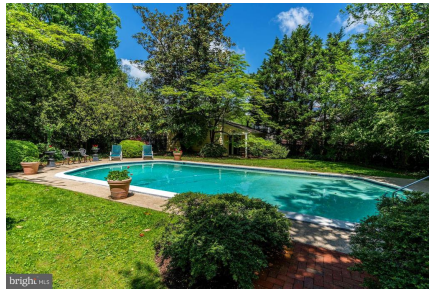
Crystal pool with expansive entertaining area



Dramatic outdoor spaces



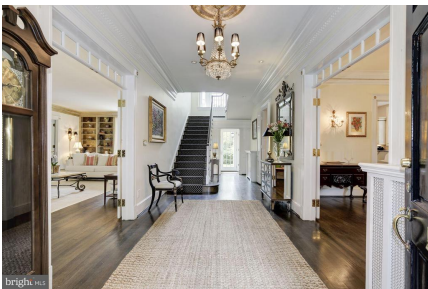
Private entrance to 18,000+ sq. ft. grounds



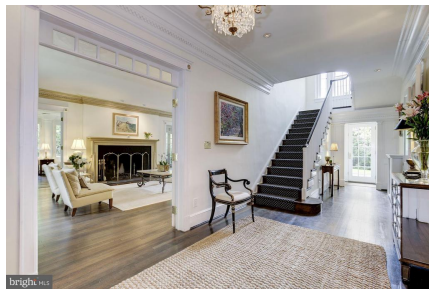
Paradise in an urban setting!



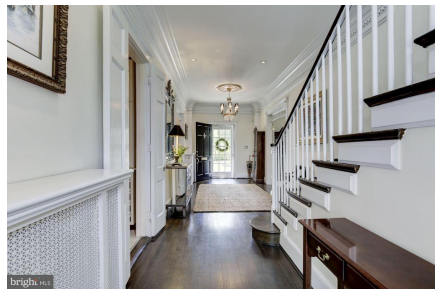
Take a deep breath and unwind.



Gracious foyer



Entry foyer with Living room off to the left



Looking towards the front door



CIMENT & SHIELDS TEAM

Barbara Ciment, Associate Broker

LONG & FOSTER REAL ESTATE

(C) 301-346-9126

(O) 301-424-0900

barbara@ciment.com

www.ciment.com





Entertain in style in Embassy-sized room



Living room with three window exposures



Striking oversized wood-burning fireplace



Elaborate millwork detailing



Classic built-ins with an abundance of storage



From foyer looking towards the dining room



Embassy-sized formal dining room



Epicurean kitchen with high-end appliances



Viking stainless steel range, cook with ease!



Breakfast room space overlooking the rear grounds



Sensational sunroom! Views from all sides.



Inviting sunroom space with walls of glass



Sunroom with French doors to beautiful terrace.



First floor powder room



Second level landing overlooking pool



CIMENT & SHIELDS TEAM

Barbara Ciment, Associate Broker

LONG & FOSTER REAL ESTATE

(C) 301-346-9126

(O) 301-424-0900

barbara@ciment.com

www.ciment.com





Owner's suite



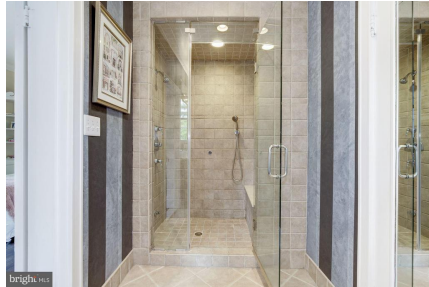
Owner's suite with fireplace, sitting area



Owner's spacious bath



Impressive spa bath area



Spa bath



Spacious secondary bedroom #2



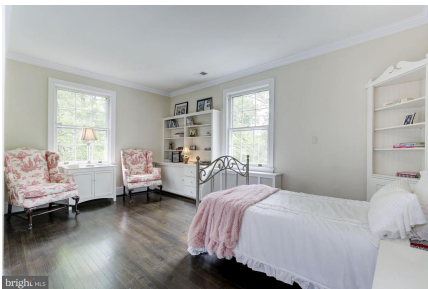
Full bath#2



Secondary bathroom



Bedroom #3



Bedroom #4



Bedroom #5



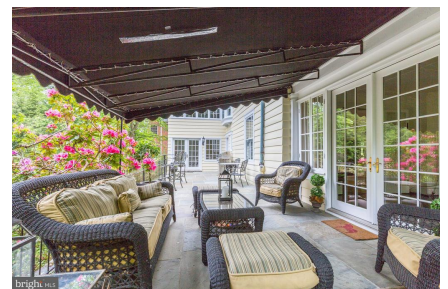
Full bath #3



Sweeping views of the backyard



Relax on the terrace



Entertain on the terrace year round



CIMENT & SHIELDS TEAM

Barbara Ciment, Associate Broker

LONG & FOSTER REAL ESTATE

(C) 301-346-9126

(O) 301-424-0900

barbara@ciment.com

www.ciment.com





Wonderful outdoor spaces



Summer evenings don't get any better than this!



Patio with fireplace



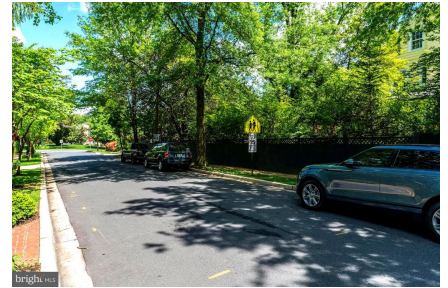
Private patio area



2-car garage with access into the yard



Private entrance



Plenty of guest parking on Hillcrest Place



Private entrance and parking on Hillcrest



Never worry about parking for your guests!



Easy access through the Town of Ch.Ch. from here



Private compound setting



Dine al fresco with these views!



Classic architecture



CIMENT & SHIELDS TEAM

Barbara Ciment, Associate Broker

LONG & FOSTER REAL ESTATE

(C) 301-346-9126

(O) 301-424-0900

barbara@ciment.com

www.ciment.com





South-facing entry



Enjoy an evening swim!



"Fourth of July" fireworks across the street @ CCC



Bethesda metro is close by



The Lawton Community center within the Town



Walk to the excitement of downtown Bethesda!



Shops & restaurants within easy walking distance!



CIMENT & SHIELDS TEAM

Barbara Ciment, Associate Broker

LONG & FOSTER REAL ESTATE

(C) 301-346-9126

(O) 301-424-0900

barbara@ciment.com

www.ciment.com

