

Recent Home Sale: 4209 CLOUDBERRY CT - \$271,500



Remarks Price improvement!! Motivated seller Come see this great three level townhouse with 2+ bedrooms and 2.5 baths for condo price. Clean and move in ready. In need of some updating. Bring your creativity and update this gem to gain instant equity. Low HOA fee. Less than one year old furnace, new carpet, stainless steel appliances, newer laminate floors. Finished basement can be used as 3rd bedroom, large deck for entertaining, nice patio with fenced in back yard. Minutes to shopping, schools, parks. Close to Route 29, I-95, 495, and ICC-200. E-Z commute to DC, Baltimore, downtown Silver Spring. AS-IS but shows well. Check it out today!

Rooms	Total	Main	Upper 1	Lower 1
Bedrooms	2		2	0
Full Baths	2		1	1
Half Baths	1	1		

Basic Information

Address 4209 CLOUDBERRY CT
City/Town BURTONSVILLE
State MD
Zip Code 20866
County MONTGOMERY
Type Interior Row/Townhouse
MLS# MDMC664018
Ownership Fee Simple

Style Colonial
Adv Subdivision VALLEY STREAM ESTATES
DOM-Prop 156
Year Built 1986
Beds 2
Baths 2/1
Lot Size 1,056
Acres 0

Tax Living Area 1,440
Levels 3+
Total Fin Sq Ft 1,440
Contract Date 2019-12-03
Close Date 2020-01-10
Close Price \$271,500
Seller Subsidy \$8,061

Exterior/Construction Features/Utilities

Lot Desc Backs - Open Common Area, Front Yard, Interior, Landscaping, Rear Yard
Exterior Vinyl Siding
Roof Asphalt
Water Type Public

Sewer Public Sewer
Hot Water Electric
Heating Forced Air, Central
Cooling Ceiling Fan(s), Central A/C
Parking Assigned

Spaces 2
Porch/Patio Deck(s), Patio(s)
Other Features Sidewalks, Street Lights

Tax/Legal Information

Tax ID # 160502552732
Tax Year 2019
Tax Assessment Value \$228,233
Total Taxes \$2,843

Legal Subdiv VALLEY STREAM ESTATES
County Tax \$2,595
Lot 238
Short Sale No

Foreclosure No
REO/Bank Owned No

Interior Features/Amenities

Appliances Dishwasher, Disposal, Dryer, Exhaust Fan, Oven/Range - Electric, Range Hood, Refrigerator, Washer, Water Heater

Int. Style Attic, Carpet, Ceiling Fan(s), Entry Level Bedroom, Floor Plan - Open, Window Treatments

Basement Full



CIMENT & SHIELDS TEAM

Barbara Ciment, Associate Broker



(C) 301-346-9126 (O) 301-424-0900
 barbara@ciment.com www.ciment.com



Recent Home Sale: 4209 CLOUDBERRY CT - \$271,500

Rooms/Levels/Flooring

Dining Room	Main	Laminated	Kitchen	Main	Laminated
Living Room	Main	Laminated	Bedroom 1	Upper 1	Carpet
Primary Bedroom	Upper 1	Carpet	Bathroom 2	Lower 1	
Family Room	Lower 1	Laminated	Foyer	Lower 1	Tile/Brick
Laundry	Lower 1				

HOA/Condo/Coop Info

HOA Fee \$86

Amenities Jog/Walk Path, Reserved/Assigned
Parking, Tot Lots/Playground

Information Courtesy of Long & Foster Real Estate, Inc.. Copyright 2021 Bright MLS. Information is believed to be accurate, but should not be relied upon without verification. Accuracy of square footage, lot size and other information is not guaranteed. This website courtesy of Barbara Ciment, Realtor, Long & Foster Real Estate, Inc.



**CIMENT
& SHIELDS** TEAM

Barbara Ciment, Associate Broker



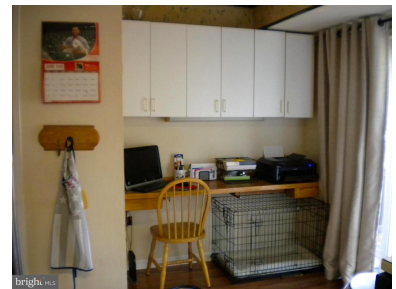
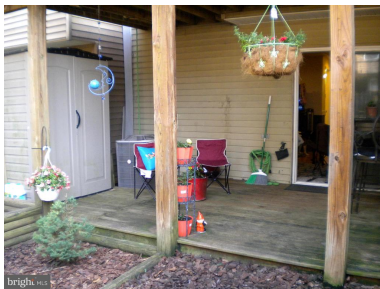
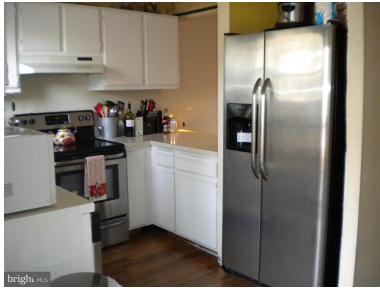
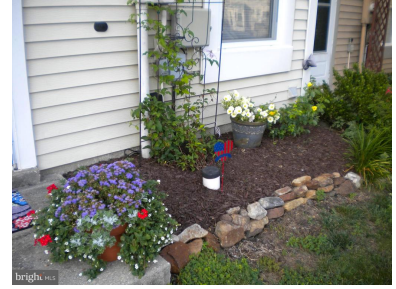
(C) 301-346-9126

(O) 301-424-0900

barbara@ciment.com

www.ciment.com





CIMENT & SHIELDS TEAM

Barbara Ciment, Associate Broker

LONG & FOSTER REAL ESTATE

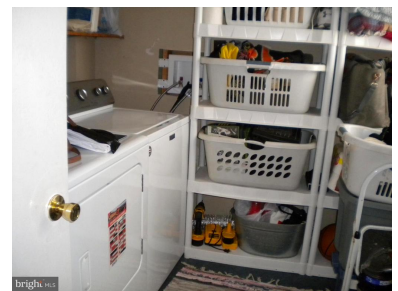
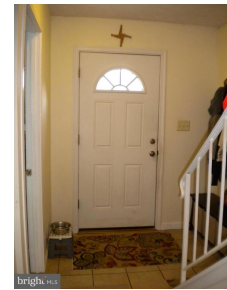
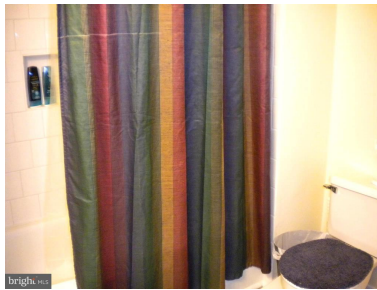
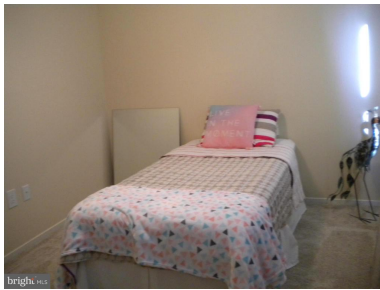
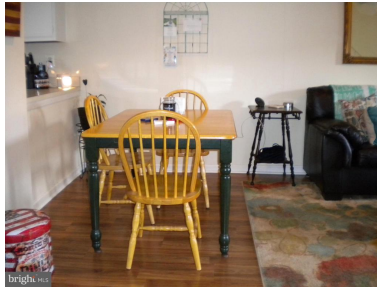
(C) 301-346-9126

(O) 301-424-0900

barbara@ciment.com

www.ciment.com





CIMENT & SHIELDS TEAM

Barbara Ciment, Associate Broker

LONG & FOSTER REAL ESTATE

(C) 301-346-9126

(O) 301-424-0900

barbara@ciment.com

www.ciment.com





CIMENT & SHIELDS TEAM

Barbara Ciment, Associate Broker

LONG & FOSTER
REALTOR® REAL ESTATE

(C) 301-346-9126 (O) 301-424-0900
barbara@ciment.com www.ciment.com

