

Recent Home Sale: 3735 AMSTERDAM TER #9-96 - \$260,000



Remarks 3 Level townhouse 3 bedrooms and 2.5 baths with NEW carpet located in Montgomery County with out the hassle of exterior or yard maintenance. Community offers a pool, sport courts, tot lots and lots of park-like common grounds You'll find plenty of parking at this end-unit as well. Located between major commuter routes, and low exterior maintenance it doesn't get much better than this! Note: owner maintains flower beds and Community association maintains the lawn. Deck is scheduled to be replaced this fall.

Rooms	Total	Upper 1	Upper 2
Bedrooms	3		3
Full Baths	2		2
Half Baths	1	1	

Basic Information

Address 3735 AMSTERDAM TER #9-96
City/Town BURTONSVILLE
State MD
Zip Code 20866
County MONTGOMERY
Type Interior Row/Townhouse
MLS# MDMC677458

Ownership Condominium
Style Traditional
Adv Subdivision TOWNES OF GLOUCESTER
DOM-Prop 27
Year Built 1984
Beds 3
Baths 2/1

Tax Living Area 1,738
Levels 3+
Total Fin Sq Ft 1,738
Contract Date 2019-11-01
Close Date 2019-12-23
Close Price \$260,000
Seller Subsidy \$10,000

Exterior/Construction Features/Utilities

Exterior Vinyl Siding
Water Type Public

Sewer Public Sewer
Heating Forced Air

Cooling Central A/C
Garage Spaces 1.00

Tax/Legal Information

Tax ID # 160502387586
Tax Year 2019
Tax Assessment Value \$210,000
Total Taxes \$2,714

Legal Subdiv TOWNES OF GLOUCESTR
COD
County Tax \$2,425
Short Sale No

Foreclosure No
REO/Bank Owned No

Interior Features/Amenities

Appliances Dishwasher, Stove, Refrigerator, Disposal, Washer, Dryer
Int. Style Carpet, Dining Area, Family Room Off Kitchen, Floor Plan - Traditional

Security Smoke Detector
Garage Basement Garage, Garage Door Opener, Inside Access

Rooms/Levels/Flooring

Basement Main

HOA/Condo/Coop Info

Condo/Coop Fee \$265

Amenities Pool - Outdoor, Recreational Center, Tot Lots/Playground

Project Name TOWNES OF GLOUCE

Information Courtesy of Keller Williams Realty. Copyright 2021 Bright MLS. Information is believed to be accurate, but should not be relied upon without verification. Accuracy of square footage, lot size and other information is not guaranteed. This website courtesy of Barbara Ciment, Realtor, Long & Foster Real Estate, Inc.



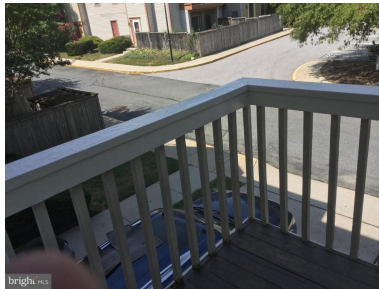
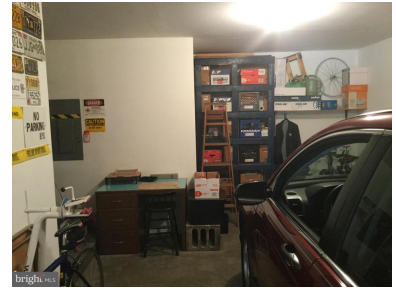
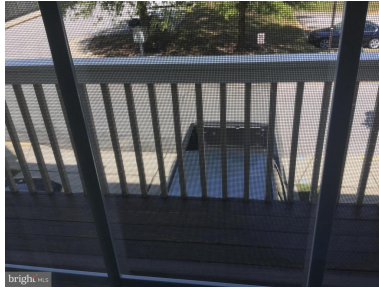
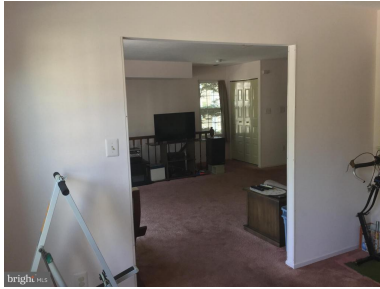
CIMENT & SHIELDS TEAM

Barbara Ciment, Associate Broker



(C) 301-346-9126 (O) 301-424-0900
 barbara@ciment.com www.ciment.com

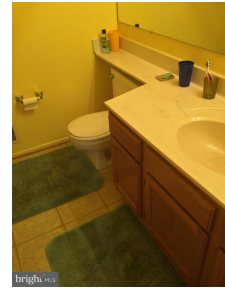
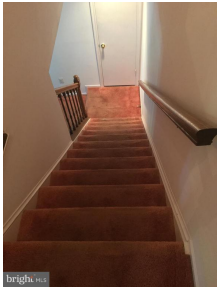
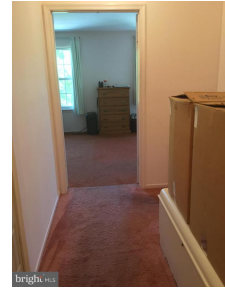
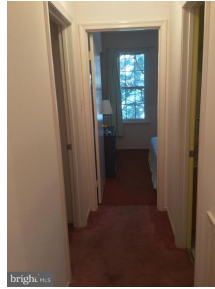
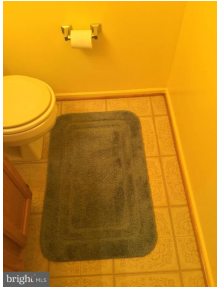
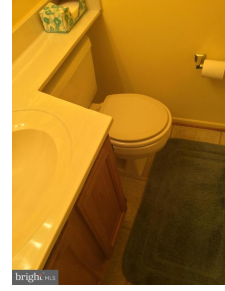
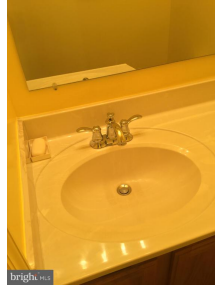




CIMENT & SHIELDS TEAM

Barbara Ciment, Associate Broker
LONG & FOSTER REAL ESTATE
(C) 301-346-9126 (O) 301-424-0900
barbara@ciment.com www.ciment.com





CIMENT & SHIELDS TEAM

Barbara Ciment, Associate Broker

LONG & FOSTER REAL ESTATE

(C) 301-346-9126

(O) 301-424-0900

barbara@ciment.com

www.ciment.com

