

Recent Home Sale: 14734 WEXHALL TER #25 - \$255,000



Remarks Welcome to 14374 Wexhall Terrace! Impressive townhome located in Burtonsville, MD. This turnkey home boasts 3 beds, 2 full baths with an open layout. The main level features laminate flooring, living room, dining room, and kitchen. The second level features 2 full bedrooms, 1 full bath, washer and dryer for convenience. The 3rd level features a large master bedroom, with a walk in closet and an ensuite bath. The association includes community pool, sport courts, and playgrounds. Conveniently located close to Silver Spring, Columbia, Rt 29, ICC, public transportation, dining, shopping, and more. Dont miss out on an amazing opportunity to own this spectacular home!

Rooms	Total	Upper 1	Upper 2
Bedrooms	3	2	1
Full Baths	2	1	1
Half Baths			

Basic Information

Address 14734 WEXHALL TER #25
City/Town BURTONSVILLE
State MD
Zip Code 20866
County MONTGOMERY
Type Interior Row/Townhouse
MLS# MDMC687008

Ownership Condominium
Style Colonial
Adv Subdivision TOWNES OF GLOUCESTER
DOM-Prop 7
Year Built 1985
Beds 3
Baths 2

Tax Living Area 1,338
Levels 3+
Total Fin Sq Ft 1,338
Contract Date 2019-11-25
Close Date 2019-12-23
Close Price \$255,000
Seller Subsidy \$7,650

Exterior/Construction Features/Utilities

Exterior Vinyl Siding
Water Type Public
Sewer Public Sewer

Heating Central, Forced Air
Cooling Central A/C
Parking Assigned

Spaces 1

Tax/Legal Information

Tax ID # 160502517545
Tax Year 2018
Tax Assessment Value \$190,000
Total Taxes \$2,342

Legal Subdiv TOWNES OF GLOUCESTR
COD
County Tax \$2,062
Short Sale No

Foreclosure No
REO/Bank Owned No

Interior Features/Amenities

Appliances Dishwasher, Oven/Range - Electric, Washer, Water Heater, Dryer

Rooms/Levels/Flooring

Primary Bedroom Main

HOA/Condo/Coop Info

Condo/Coop Fee \$265

Amenities Pool - Outdoor, Tot Lots/Playground, Tennis Courts

Project Name TOWNES OF GLOUCE

Information Courtesy of RLAH @properties. Copyright 2021 Bright MLS. Information is believed to be accurate, but should not be relied upon without verification. Accuracy of square footage, lot size and other information is not guaranteed. This website courtesy of Barbara Ciment, Realtor, Long & Foster Real Estate, Inc.



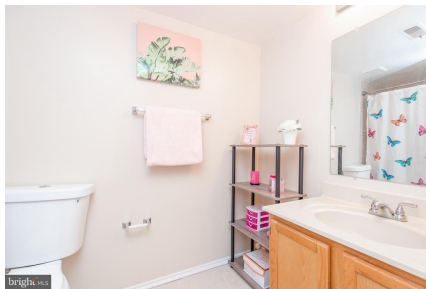
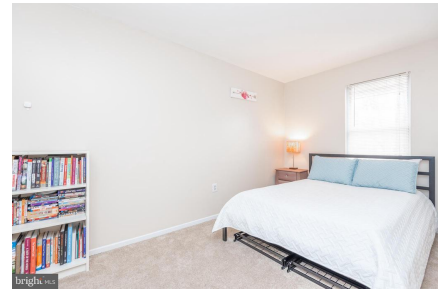
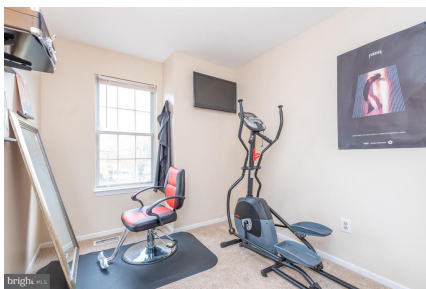
CIMENT & SHIELDS TEAM

Barbara Ciment, Associate Broker



(C) 301-346-9126 (O) 301-424-0900
 barbara@ciment.com www.ciment.com

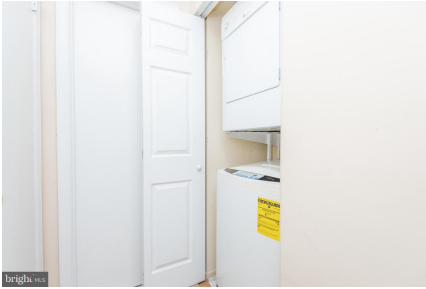




CIMENT & SHIELDS TEAM

Barbara Ciment, Associate Broker
LONG & FOSTER REAL ESTATE
REALTOR® EQUAL HOUSING OPPORTUNITY
(C) 301-346-9126 (O) 301-424-0900
barbara@ciment.com www.ciment.com





CIMENT & SHIELDS TEAM

Barbara Ciment, Associate Broker

LONG & FOSTER REAL ESTATE

(C) 301-346-9126

(O) 301-424-0900

barbara@ciment.com

www.ciment.com

