

: -



**Remarks**

Rooms	Total
Bedrooms	
Full Baths	
Half Baths	

**Basic Information**

Lot Size 0

Acres 0

Tax Living Area 0

**Tax/Legal Information**

Tax ID #

Foreclosure No

Short Sale No

REO/Bank Owned No

Information Courtesy of . Copyright 2021 Bright MLS. Information is believed to be accurate, but should not be relied upon without verification. Accuracy of square footage, lot size and other information is not guaranteed. This website courtesy of Barbara Ciment, Realtor, Long & Foster Real Estate, Inc.



**Barbara Ciment, Associate Broker**



(C) 301-346-9126

(O) 301-424-0900

[barbara@ciment.com](mailto:barbara@ciment.com)

[www.ciment.com](http://www.ciment.com)





Entrance to home



Entrance with view of Sunroom



View of front of home



View of Side loading garage



Evening view of home



Entrance foyer



Family room



Family room with fireplace



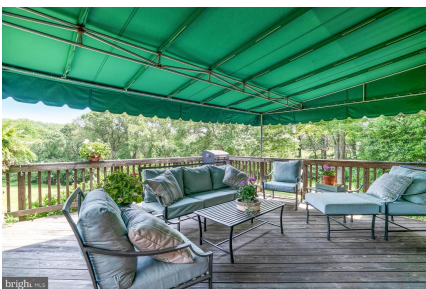
Kitchen with stainless steel appliances



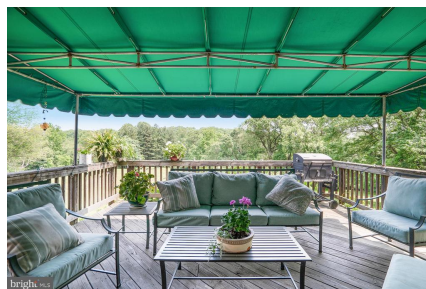
Kitchen showing glass cabinets



Kitchen with view of deck



Covered Outdoor Deck



Covered outdoor deck



Dining room



**CIMENT & SHIELDS TEAM**

**Barbara Ciment, Associate Broker**

**LONG & FOSTER REAL ESTATE**

(C) 301-346-9126

(O) 301-424-0900

[barbara@ciment.com](mailto:barbara@ciment.com)

[www.ciment.com](http://www.ciment.com)







Dining Room



Living Room



Living Room



Sunroom



Sunroom



Main floor half bath



Master bedroom



Master bedroom



Master bath



Hall bath



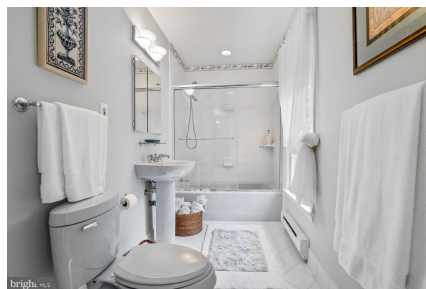
Second Bedroom



Third bedroom



Fourth bedroom



Master bath



View of the back of the home



**CIMENT & SHIELDS TEAM**

**Barbara Ciment, Associate Broker**

**LONG & FOSTER REAL ESTATE**

(C) 301-346-9126

(O) 301-424-0900

barbara@ciment.com

www.ciment.com







View of the back of the home



View of the back of the home



Aerial view of the lot



Aerial view of the back of the home



View of the back yard



Aerial view of the home



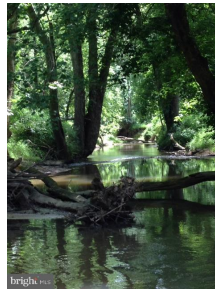
Aerial view of the home



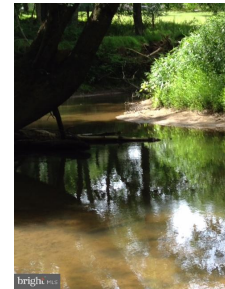
Aerial view of the neighborhood



Back yard



Hawlings River located in the back of the home



Hawlings River located in the back of the home



Fawn feeding in the yard



**CIMENT & SHIELDS TEAM**

**Barbara Ciment, Associate Broker**

**LONG & FOSTER REAL ESTATE**

(C) 301-346-9126

(O) 301-424-0900

[barbara@ciment.com](mailto:barbara@ciment.com)

[www.ciment.com](http://www.ciment.com)

