

Recent Home Sale: 18619 BLACK KETTLE DR - \$561,750



Remarks Classic style, this elegant colonial is poised to excite you. Located on a quite cul-de-sac large corner lot. Starts with a stunning two-story foyer, hardwood floors continue throughout living and dining rooms. Enjoy a formal living and dining room with abundant natural sunlight enhanced by the large windows. The relaxing family room features a lovely cathedral ceiling; classic brick gas fireplace and private 2nd staircase. The gourmet kitchen features sparkling granite counters and stainless-steel appliances. The kitchen is open to the sunlit breakfast area. Retreat in comfort in the elegant owner's suite. This space features a private luxury bath, and a walk-in closet. The other upper-level bedrooms 2 and 3 are serviced by a convenient jack-n-jill bathroom and bedroom 4 has its own on-suite bathroom. A finished walkout lower level boasts its own kitchenette. A must see!

Rooms	Total	Main	Upper 1	Lower 1
Bedrooms	4	0	4	0
Full Baths	4	0	3	1
Half Baths	1	1	0	0

Basic Information

Address 18619 BLACK KETTLE DR
City/Town BOYDS
State MD
Zip Code 20841
County MONTGOMERY
Type Detached
MLS# MDMC679574
Ownership Fee Simple

Style Colonial
Adv Subdivision HOYLES MILL VILLAGE
DOM-Prop 22
Year Built 2003
Beds 4
Baths 4/1
Lot Size 10,371
Acres 0

Tax Living Area 4,640
Levels 3+
Total Fin Sq Ft 4,640
Contract Date 2019-10-07
Close Date 2019-11-22
Close Price \$561,750

Exterior/Construction Features/Utilities

Exterior Brick
Roof Asphalt
Water Type Public

Sewer Public Sewer
Heating Forced Air
Cooling Central A/C

Garage Spaces 2.00

Tax/Legal Information

Tax ID # 160603295037
Tax Year 2019
Tax Assessment Value \$714,400
Total Taxes \$8,878

Legal Subdiv HOYLES MILL VILLAGE
County Tax \$7,518
Lot 16
Section 2C

Short Sale No
Foreclosure No
REO/Bank Owned Yes

Interior Features/Amenities

Fireplaces 1

Basement Full, Fully Finished, Walkout Level
Garage Garage - Front Entry

HOA/Condo/Coop Info

HOA Fee \$1

Information Courtesy of Pavilion Real Estates L.L.C.. Copyright 2021 Bright MLS. Information is believed to be accurate, but should not be relied upon without verification. Accuracy of square footage, lot size and other information is not guaranteed. This website courtesy of Barbara Ciment, Realtor, Long & Foster Real Estate, Inc.



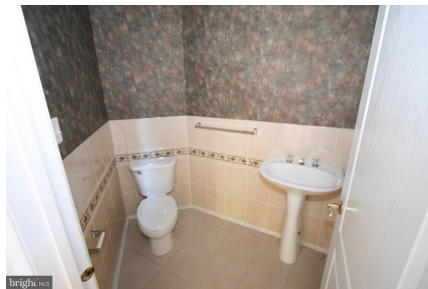
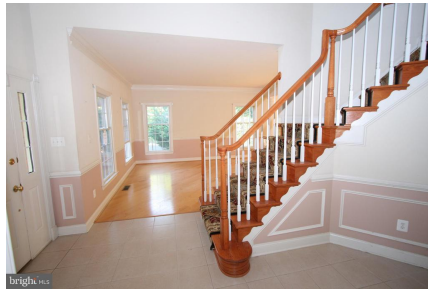
CIMENT & SHIELDS TEAM

Barbara Ciment, Associate Broker



(C) 301-346-9126 (O) 301-424-0900
 barbara@ciment.com www.ciment.com





CIMENT & SHIELDS TEAM

Barbara Ciment, Associate Broker

LONG & FOSTER REAL ESTATE

(C) 301-346-9126

(O) 301-424-0900

barbara@ciment.com

www.ciment.com





CIMENT & SHIELDS TEAM

Barbara Ciment, Associate Broker

LONG & FOSTER REAL ESTATE

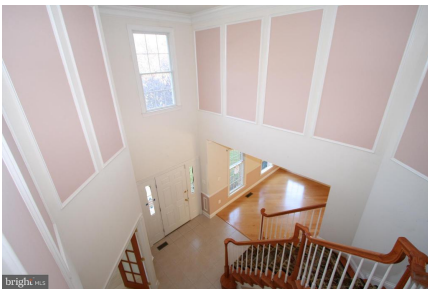
(C) 301-346-9126

(O) 301-424-0900

barbara@ciment.com

www.ciment.com





CIMENT & SHIELDS TEAM

Barbara Ciment, Associate Broker

LONG & FOSTER REAL ESTATE

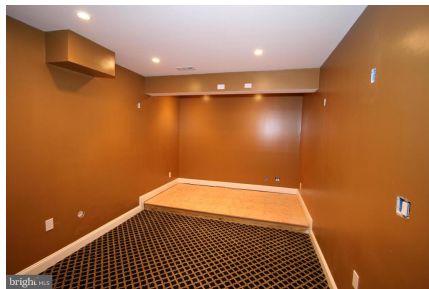
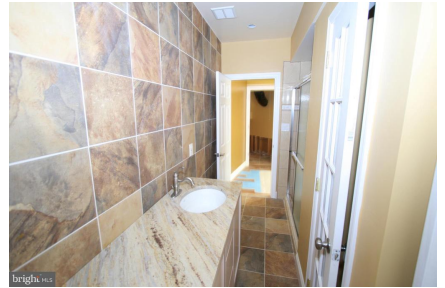
(C) 301-346-9126

(O) 301-424-0900

barbara@ciment.com

www.ciment.com





CIMENT & SHIELDS TEAM

Barbara Ciment, Associate Broker

LONG & FOSTER REAL ESTATE

(C) 301-346-9126

(O) 301-424-0900

barbara@ciment.com

www.ciment.com





CIMENT & SHIELDS TEAM

Barbara Ciment, Associate Broker

LONG & FOSTER REAL ESTATE

(C) 301-346-9126

(O) 301-424-0900

barbara@ciment.com

www.ciment.com

