

: -

Remarks



Rooms	Total
Bedrooms	
Full Baths	
Half Baths	

**Basic Information**

Lot Size 0

Acres 0

Tax Living Area 0

**Tax/Legal Information**

Tax ID #

Foreclosure No

Short Sale No

REO/Bank Owned No

Information Courtesy of . Copyright 2021 Bright MLS. Information is believed to be accurate, but should not be relied upon without verification. Accuracy of square footage, lot size and other information is not guaranteed. This website courtesy of Barbara Ciment, Realtor, Long & Foster Real Estate, Inc.



Barbara Ciment, Associate Broker



(C) 301-346-9126

(O) 301-424-0900

barbara@ciment.com

www.ciment.com





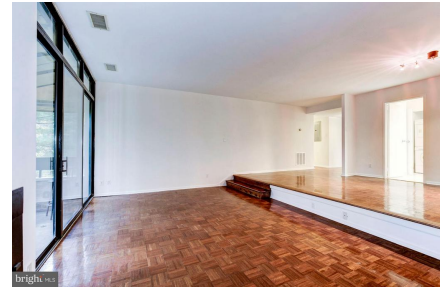
Entry Foyer



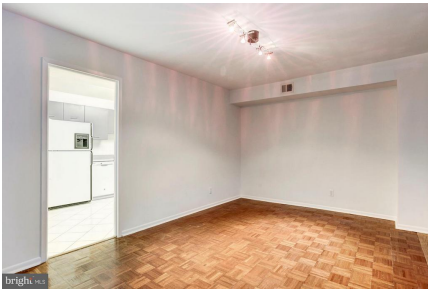
Living Room with Fireplace and Walls of Windows



Living Room with Built-ins, Fireplace & Light



Living Room view to Dining Area



Dining Room leads to Kitchen



Dining Room view of Living Room



Kitchen with two entry ways



Open Updated Kitchen



Open Updated Kitchen



Open Updated Kitchen



**CIMENT & SHIELDS TEAM**

**Barbara Ciment, Associate Broker**

**LONG & FOSTER REAL ESTATE**

(C) 301-346-9126

(O) 301-424-0900

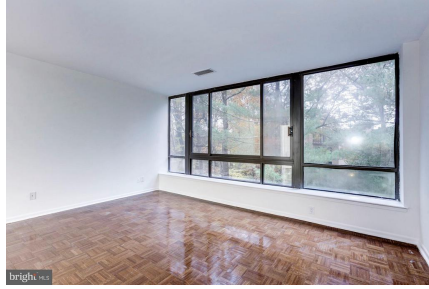
barbara@ciment.com

www.ciment.com





Spacious Master Bedroom



Spacious Master Bedroom with lots of light



Master Bedroom



Master Bathroom



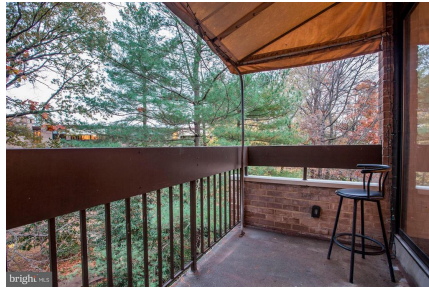
Bedroom #2



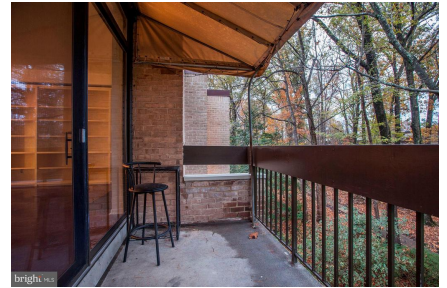
Bedroom #2



Bathroom #2



Private Patio with wooded Views



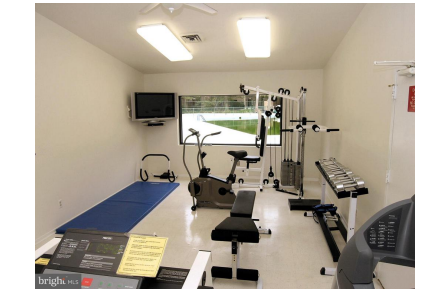
Private Patio with wooded Views



Guard House at Front Entry



Community Center



Fitness Center



Swimming Pool



Tennis Court



Bench and Walking Paths



**CIMENT & SHIELDS TEAM**

**Barbara Ciment, Associate Broker**

**LONG & FOSTER REAL ESTATE**

(C) 301-346-9126

(O) 301-424-0900

barbara@ciment.com

www.ciment.com





Capital Crescent Trail



Shopping Plaza



**CIMENT & SHIELDS TEAM**

**Barbara Ciment, Associate Broker**

**LONG & FOSTER**  
REALTOR® REAL ESTATE

(C) 301-346-9126

(O) 301-424-0900

[barbara@ciment.com](mailto:barbara@ciment.com)

[www.ciment.com](http://www.ciment.com)

