

Recent Home Sale: 4545 S CHELSEA LN - \$760,000



Remarks NEW PRICE. Arguably the prettiest cottage on the block, this 1930s picture-book Cape Cod resides within the Glenbrook Village section of East Bethesda. Walk to Metro (NIH Medical Center/Red Line is 0.7 miles), downtown Bethesda, NIH-Walter Reed, parks and hundreds of shops and restaurants. Harris Teeter and Starbucks are just a few blocks away. Walk Score gives it an 74, which means most errands can be done on foot. Renovated kitchen with stainless appliances, quartz countertops and spacious pantry opens to sunny separate dining room. Living room with wood-burning fireplace, open to family/TV room (which can easily be returned to its original bedroom layout). Upstairs you'll find a generous bedroom running the entire length of the house with 2 walk-in-closets/office and a full bath. Basement offers a spacious rec room, 3rd full bath with jacuzzi, work shop, guest room with pull-down Murphy bed and laundry/utility room with an exit to the side yard. Verdant outdoor space that oozes with charm - raised deck, ample seating and dining spaces, a hot tub and a shed. There is off-street parking.

Rooms	Total	Main	Upper 1	Lower 1
Bedrooms	3	2	1	0
Full Baths	3	1	1	1
Half Baths	0	0	0	0

Basic Information

Address 4545 S CHELSEA LN
City/Town BETHESDA
State MD
Zip Code 20814
County MONTGOMERY
Type Detached
MLS# MDMC625732
Ownership Fee Simple

Style Cape Cod
Adv Subdivision GLENBROOK VILLAGE
DOM-Prop 32
Year Built 1938
Beds 3
Baths 3
Lot Size 5,280
Acres 0

Tax Living Area 1,764
Levels 3+
Total Fin Sq Ft 2,064
Contract Date 2019-04-28
Close Date 2019-07-10
Close Price \$760,000

Exterior/Construction Features/Utilities

Exterior Brick
Roof Asphalt
Water Type Public
Sewer Public Sewer

Heating Forced Air
Cooling Central A/C
Parking Asphalt Driveway
Porch/Patio Deck(s), Patio(s)

Other Shed
Other Features Hot Tub

Tax/Legal Information

Tax ID # 160700501275
Tax Year 2019
Tax Assessment Value \$775,333
Total Taxes \$9,380

Legal Subdiv GLENBROOK VILLAGE
County Tax \$8,860
Lot 26
Short Sale No

Foreclosure No
REO/Bank Owned No

Interior Features/Amenities

Appliances Built-In Microwave, Dishwasher, Oven/Range - Gas, Refrigerator, Stainless Steel Appliances, Washer - Front Loading, Water Heater, Dryer - Gas

Int. Style Ceiling Fan(s), Wood Floors, WhirlPool/HotTub, Walk-in Closet(s), Upgraded Countertops, Formal/Separate Dining Room, Entry Level Bedroom, Carpet

Fireplaces 1
Fireplace Fireplace - Glass Doors
Basement Full

Information Courtesy of Compass. Copyright 2021 Bright MLS. Information is believed to be accurate, but should not be relied upon without verification. Accuracy of square footage, lot size and other information is not guaranteed. This website courtesy of Barbara Ciment, Realtor, Long & Foster Real Estate, Inc.



CIMENT & SHIELDS TEAM

Barbara Ciment, Associate Broker



(C) 301-346-9126 (O) 301-424-0900
 barbara@ciment.com www.ciment.com





Bright and sunny Living Room

Family Room with exit to deck



Entryway with view of dining room



Dining Room



Dining room



Kitchen circa 2018



Kitchen



Kitchen with view to pantry



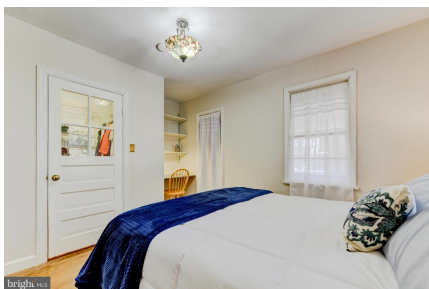
Pantry with exit to deck



1st floor bedroom



1st Floor Bath with tub



1st floor bedroom



Master bedroom



Master bedroom



CIMENT & SHIELDS TEAM

Barbara Ciment, Associate Broker

LONG & FOSTER REAL ESTATE

(C) 301-346-9126

(O) 301-424-0900

barbara@ciment.com

www.ciment.com





2nd floor changing room/office



2nd floor bathroom



Freshly painted basement



Guest room with Murphy bed



Lower level guest room with Murphy bed



LL guest room with built-in desk & shelving



Lower level full bath with jetted tub.



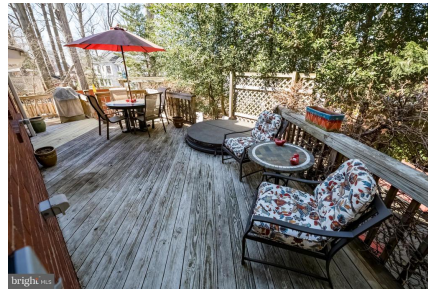
Laundry room with exit to side yard



Work shop/utilities



Deck



Deck with hot tub



Hot tub



Stone patio



Stone patio



Patio/swing



CIMENT & SHIELDS TEAM

Barbara Ciment, Associate Broker

LONG & FOSTER REAL ESTATE

(C) 301-346-9126

(O) 301-424-0900

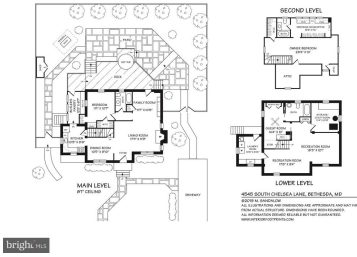
barbara@ciment.com

www.ciment.com





Lush landscaping



Floor plan



CIMENT & SHIELDS TEAM

Barbara Ciment, Associate Broker

LONG & FOSTER REAL ESTATE

(C) 301-346-9126 (O) 301-424-0900
barbara@ciment.com www.ciment.com

