

Recent Home Sale: 4511 GRETNA ST - \$749,000



Remarks Beautifully upgraded 4 level split in Parkview. Features 3 BR, 3BA, contemporary open floor plan. Living Room with fireplace and built-ins, formal dining room, kitchen with granite and stainless steel appliances. Wonderful family room with french door to the patio, bonus room provides a great flexible space for office, guest room or exercise room. Huge basement provides lots of storage, workshop space, laundry area and utility area. Quiet location but close to public transportation, NIH/Walter Reed, Rock Creek Park, schools, shopping and much more!

Rooms	Total	Upper 1	Lower 1
Bedrooms	3	3	
Full Baths	3	2	1
Half Baths			

Basic Information

Address 4511 GRETNA ST
City/Town BETHESDA
State MD
Zip Code 20814
County MONTGOMERY
Type Detached
MLS# MDMC649554
Ownership Fee Simple

Style Split Level
Adv Subdivision PARKVIEW
DOM-Prop 19
Year Built 1955
Beds 3
Baths 3
Lot Size 7,000
Acres 0

Tax Living Area 2,736
Levels 3+
Total Fin Sq Ft 2,736
Contract Date 2019-04-23
Close Date 2019-06-21
Close Price \$749,000

Exterior/Construction Features/Utilities

Exterior Brick
Roof Asphalt
Water Type Public

Sewer Public Sewer
Hot Water Natural Gas
Heating Forced Air

Cooling Central A/C

Tax/Legal Information

Tax ID # 160700628421
Tax Year 2019
Tax Assessment Value \$641,033
Total Taxes \$7,692

Legal Subdiv PARKVIEW
County Tax \$7,171
Lot 17
Short Sale No

Foreclosure No
REO/Bank Owned No

Interior Features/Amenities

Appliances Built-In Microwave, Disposal, Dishwasher, Dryer - Front Loading, Oven/Range - Electric, Refrigerator, Stainless Steel Appliances, Washer - Front Loading

Int. Style Built-Ins, Crown Moldings, Dining Area, Kitchen - Table Space, Primary Bath(s), Upgraded Countertops, Wood Floors
Fireplaces 1

Fireplace Screen
Basement Rear Entrance, Walkout Level, Outside Entrance, Interior Access

Rooms/Levels/Flooring

Dining Room Main
Kitchen Main
Family Room Lower 1
Basement Lower 2

Foyer Main
Living Room Main
Office Lower 1
Utility Room Lower 2

Information Courtesy of Long & Foster Real Estate, Inc.. Copyright 2021 Bright MLS. Information is believed to be accurate, but should not be relied upon without verification. Accuracy of square footage, lot size and other information is not guaranteed. This website courtesy of Barbara Ciment, Realtor, Long & Foster Real Estate, Inc.



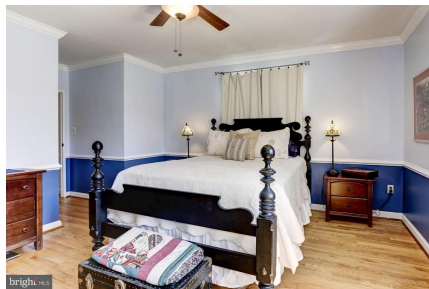
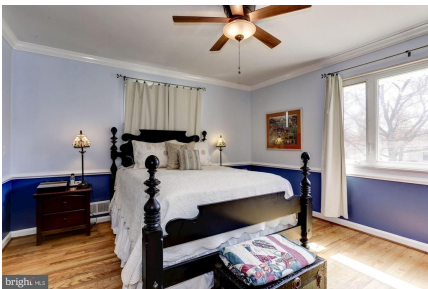
CIMENT & SHIELDS TEAM

Barbara Ciment, Associate Broker



(C) 301-346-9126 (O) 301-424-0900
 barbara@ciment.com www.ciment.com

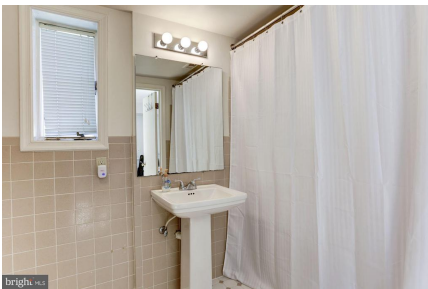




CIMENT & SHIELDS TEAM

Barbara Ciment, Associate Broker
LONG & FOSTER REAL ESTATE
(C) 301-346-9126 (O) 301-424-0900
barbara@ciment.com www.ciment.com





CIMENT & SHIELDS TEAM

Barbara Ciment, Associate Broker
LONG & FOSTER REAL ESTATE
(C) 301-346-9126 (O) 301-424-0900
barbara@ciment.com www.ciment.com





CIMENT & SHIELDS TEAM

Barbara Ciment, Associate Broker

LONG & FOSTER REAL ESTATE

(C) 301-346-9126

(O) 301-424-0900

barbara@ciment.com

www.ciment.com

