

: -



Remarks

Rooms	Total
Bedrooms	
Full Baths	
Half Baths	

Basic Information

Lot Size 0

Acres 0

Tax Living Area 0

Tax/Legal Information

Tax ID #

Foreclosure No

Short Sale No

REO/Bank Owned No

Information Courtesy of . Copyright 2021 Bright MLS. Information is believed to be accurate, but should not be relied upon without verification. Accuracy of square footage, lot size and other information is not guaranteed. This website courtesy of Barbara Ciment, Realtor, Long & Foster Real Estate, Inc.



Barbara Ciment, Associate Broker



(C) 301-346-9126

(O) 301-424-0900

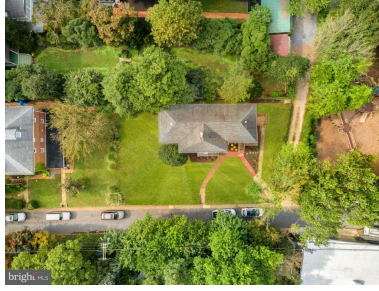
barbara@ciment.com

www.ciment.com





Adjacent to Historic Annapolis Harbor



Large Front and Side Yards



Located in the Heart of Downtown Annapolis



Spacious yard



Steps To Downtown Annapolis



Stroll to Waterfront Attractions



Steps to Historic St. Mary's Church



Unbeatable Location!



Proximity to Spa Creek



Walk to Naval Academy



Large Lot in Historic Annapolis



Playground Next Door



Mid Level Apt Living Room



Mid Level Apt Fireplace - Electric Insert



Mid Level Apt Bedroom #1



**CIMENT & SHIELDS TEAM**

**Barbara Ciment, Associate Broker**

**LONG & FOSTER REAL ESTATE**

(C) 301-346-9126

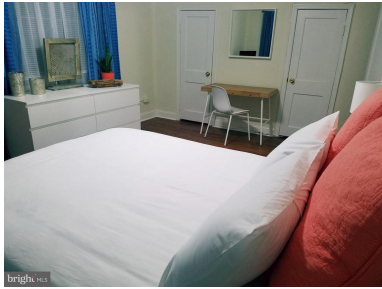
(O) 301-424-0900

barbara@ciment.com

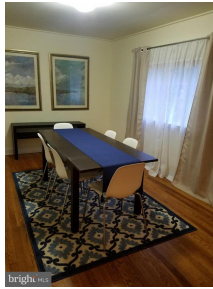
www.ciment.com







Mid Level Apt Bedroom #1



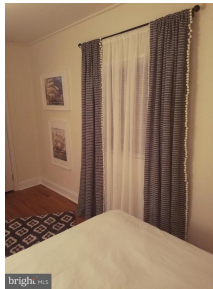
Mid Level Apt Dining Room



Mid Level Apt Bedroom #2



Mid Level Apt Pass-Through Kitchen



Mid Level Apt Bedroom #3



Mid Level Apt Tub/Shower Bath



Lower Apt Side Entrance



Lower Apt Living Room



Lower Apt Living Room



Lower Apt Kitchen Dining Area



Lower Apt Bedroom #1



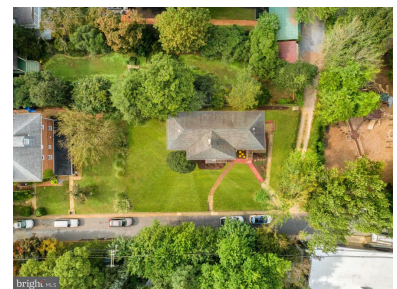
Lower Apt Bedroom #2



Lower Apt Tub/Shower Bath



Top Apt Photos Not Shown



Spacious Lot in Heart of Downtown Annapolis!



**CIMENT & SHIELDS TEAM**

**Barbara Ciment, Associate Broker**

**LONG & FOSTER REAL ESTATE**

(C) 301-346-9126

(O) 301-424-0900

barbara@ciment.com

www.ciment.com

