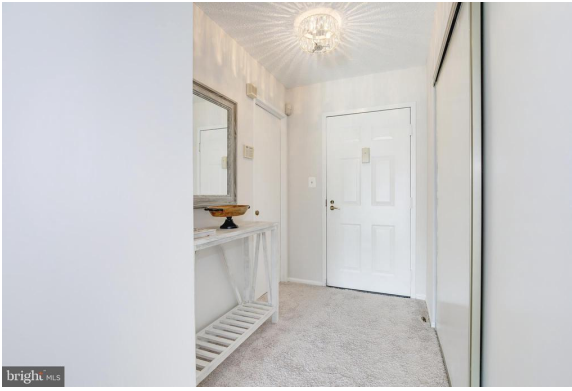


Recent Home Sale: 15101 INTERLACHEN DR #1-125 - \$170,000



Remarks Luxury lifestyle in the heart of Montgomery County with resort-style living all for a very affordable price! Leisure World boasts a convenient location near the shopping/dining/entertainment options in MD and nearby DC, as well as unparalleled on-site amenities for the 55+ community. Formal entry foyer leads to the open living and dining areas of this spacious G model condo at The Greens featuring one large bedroom, with a large bath and ample storage including built-ins and a walk-in closet. In-unit laundry, separate storage unit, and AMPLE PARKING INCLUDED. The kitchen is just off the dining area and provides functional space to grab a quick bite or whip up a gourmet delight and entertain friends. Enclosed sunroom makes for the perfect spot to enjoy morning coffee while taking in the treed view. View the golf course from your sunroom. Fancy a furry friend to join you? Leisure World is pet-friendly! A variety of activities and more than 90 special-interest resident clubs are just outside your door! Indoor/outdoor pools, clubhouses, 18-hole championship golf course, restaurants, state-of-the-art fitness center, walking trails, tennis and pickleball, classes and events--all without leaving the community! Basic cable included in monthly fee. Daily shuttle service, on-site MedStar Health and credit union; gated access with 24-hour security. A rare chance to live in the sought-after Leisure World and experience the ultimate lifestyle!

Rooms	Total	Main
Bedrooms	1	1
Full Baths	1	1
Half Baths		

Basic Information

Address 15101 INTERLACHEN DR #1-125
City/Town SILVER SPRING
State MD
Zip Code 20906
County MONTGOMERY
Type Unit/Flat/Apartment
MLS# MDMC2074390

Ownership Condominium
Style Unit/Flat, Traditional, Contemporary
Adv Subdivision GREENS AT LEISURE WORLD
DOM-Prop 4
Year Built 1984
Beds 1

Baths 1
Tax Living Area 965
Levels 1
Total Fin Sq Ft 965
Contract Date 2022-11-11
Close Date 2022-12-09
Close Price \$170,000

Exterior/Construction Features/Utilities

Exterior Brick Front, Block, Masonry
Water Type Public
Sewer Public Sewer

Hot Water Natural Gas
Heating Central
Cooling Central A/C

Parking Paved Parking, Secure Parking

Tax/Legal Information

Tax ID # 161302406373
Tax Year 2022
Tax Assessment Value \$123,167
Total Taxes \$1,414

Legal Subdiv THE GRNS AT LEISURE WRLD
County Tax \$1,359
City/Town Taxes \$0
Short Sale No
Foreclosure No
REO/Bank Owned No



CIMENT & SHIELDS TEAM

Barbara Ciment, Associate Broker

LONG & FOSTER REAL ESTATE

(C) 301-346-9126 (O) 301-424-0900
 barbara@ciment.com www.ciment.com



Recent Home Sale: 15101 INTERLACHEN DR #1-125 - \$170,000

HOA/Condo/Coop Info

Condo/Coop Fee \$709

Other Fees 350.00

Amenities Art Studio, Bank / Banking On-site, Bike Trail, Billiard Room, Cable, Club House, Common Grounds, Community Center, Concierge, Dog Park, Elevator, Exercise Room, Extra Storage, Fax/Copying, Fitness Center, Game Room, Gated Community, Golf Club, Golf Course, Golf Course Membership Available, Jog/Walk Path, Lake, Library, Meeting Room, Party Room, Picnic Area, Pool - Outdoor, Pool - Indoor, Putting Green, Recreational Center, Reserved/Assigned Parking, Retirement Community, Security, Swimming Pool, Tennis Courts, Transportation Service, Other

Information Courtesy of KLR Real Estate Inc. Copyright 2021 Bright MLS. Information is believed to be accurate, but should not be relied upon without verification. Accuracy of square footage, lot size and other information is not guaranteed. This website courtesy of Barbara Ciment, Realtor, Long & Foster Real Estate, Inc.



**CIMENT
& SHIELDS** TEAM

Barbara Ciment, Associate Broker



(C) 301-346-9126

(O) 301-424-0900

barbara@ciment.com

www.ciment.com

