

Recent Home Sale: 3210 N LEISURE WORLD BLVD #512 - \$295,900



Remarks Just what you have been looking for! A Spacious Open Floor Plan with an extra large enclosed balcony! Garage parking Space #52 also included! Have fun with this contemporary unit. Fresh paint and new carpet. Newer Stainless Steel Appliances. 2 Bedrooms, both flowing onto the enclosed balcony. 2 Full Baths. Fresh Paint and New Carpet. Washer/Dryer is in a separate laundry area. Lot's of closets and additional storage. This unit also includes an additional storage bin. New Gas Furnace and Air Conditioner, 2018. You will not be disappointed! Future Estimated Taxes \$3680.65. Condo Fee \$775.00

Rooms	Total	Main
Bedrooms	2	2
Full Baths	2	2
Half Baths		

Basic Information

Address 3210 N LEISURE WORLD BLVD #512
City/Town SILVER SPRING
State MD
Zip Code 20906
County MONTGOMERY
Type Unit/Flat/Apartment
MLS# MDMC738874

Ownership Condominium
Style Traditional
Model EE Model with Garage
Adv Subdivision VANTAGE POINT WEST AT LW
DOM-Prop 49
Year Built 2001
Beds 2

Baths 2
Tax Living Area 1,260
Levels 1
Total Fin Sq Ft 1,260
Contract Date 2021-02-05
Close Date 2021-04-21
Close Price \$295,900

Exterior/Construction Features/Utilities

Exterior Brick
Water Type Public
Sewer Public Sewer

Hot Water Electric
Heating Forced Air
Cooling Central A/C

Garage Spaces 1.00

Tax/Legal Information

Tax ID # 161303352264
Tax Year 2021
Tax Assessment Value \$315,000

Total Taxes \$3,163
Legal Subdiv VANTAGE POINT WEST AT LE
County Tax \$2,958

Short Sale No
Foreclosure No
REO/Bank Owned No

Interior Features/Amenities

Garage Underground

HOA/Condo/Coop Info

HOA Fee \$0
Condo/Coop Fee \$775
Other Fees 350.00

Amenities Billiard Room, Club House, Cable, Elevator, Fitness Center, Gated Community, Golf Course Membership Available, Jog/Walk Path, Pool - Indoor, Pool - Outdoor, Putting Green, Security, Swimming Pool, Tennis Courts

Information Courtesy of Douglas Realty. Copyright 2021 Bright MLS. Information is believed to be accurate, but should not be relied upon without verification. Accuracy of square footage, lot size and other information is not guaranteed. This website courtesy of Barbara Ciment, Realtor, Long & Foster Real Estate, Inc.



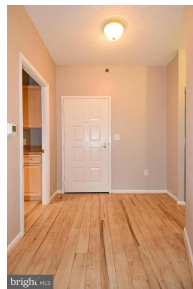
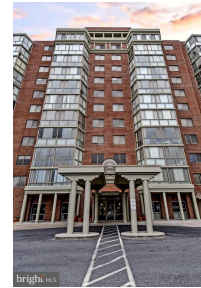
CIMENT & SHIELDS TEAM

Barbara Ciment, Associate Broker



(C) 301-346-9126 (O) 301-424-0900
 barbara@ciment.com www.ciment.com





CIMENT & SHIELDS TEAM

Barbara Ciment, Associate Broker
LONG & FOSTER REAL ESTATE
REALTOR® EQUAL HOUSING OPPORTUNITY
(C) 301-346-9126 (O) 301-424-0900
barbara@ciment.com www.ciment.com





CIMENT & SHIELDS TEAM

Barbara Ciment, Associate Broker

LONG & FOSTER REAL ESTATE

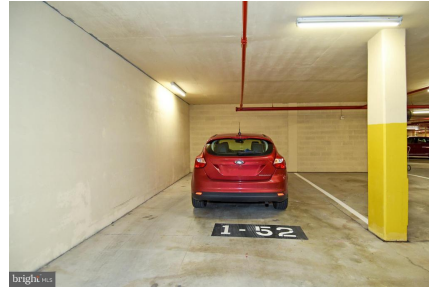
(C) 301-346-9126

(O) 301-424-0900

barbara@ciment.com

www.ciment.com





CIMENT & SHIELDS TEAM

Barbara Ciment, Associate Broker

LONG & FOSTER REAL ESTATE

(C) 301-346-9126

(O) 301-424-0900

barbara@ciment.com

www.ciment.com

