

Recent Home Sale: 3100 N LEISURE WORLD BLVD #724 - \$327,500



Remarks 55+ SENIOR LIVING. BRIGHT OPEN "EE" MODEL WITH 2 BR 2 BA. 1242 SQ FT PLUS GARAGE SPACE. NEW FLOORS THROUGHOUT - INCLUDING THE KITCHEN. SPACIOUS SUNROOM OPENS FROM LIVING ROOM AND BOTH BEDROOMS. PANORAMIC VIEWS OF TREES AND GOLF COURSE. AND ALL THAT LEISURE WORLD HAS TO OFFER - SWIM, GOLF, TENNIS, CLUBS AND ORGANIZATIONS TO SUIT ANY INTEREST.

Rooms	Total	Main
Bedrooms	2	2
Full Baths	2	2
Half Baths		

Basic Information

Address 3100 N LEISURE WORLD BLVD #724
City/Town SILVER SPRING
State MD
Zip Code 20906
County MONTGOMERY
Type Unit/Flat/Apartment
MLS# MDMC683076

Ownership Condominium
Style Traditional
Model EE w/ Garage
Adv Subdivision LEISURE WORLD
DOM-Prop 21
Year Built 2004
Beds 2
Baths 2

Tax Living Area 1,242
Levels 1
Total Fin Sq Ft 1,242
Contract Date 2019-11-06
Close Date 2019-12-13
Close Price \$327,500

Exterior/Construction Features/Utilities

Exterior Brick
Water Type Public
Sewer Public Sewer

Hot Water Multi-tank
Heating Forced Air
Cooling Central A/C

Garage Spaces 1.00

Tax/Legal Information

Tax ID # 161303445778
Tax Year 2019
Tax Assessment Value \$255,000
Total Taxes \$2,925

Legal Subdiv OVERLOOK AT LEISURE WORL
County Tax \$2,885
Short Sale No

Foreclosure No
REO/Bank Owned No

Interior Features/Amenities

Appliances Dishwasher, Disposal, Dryer, Exhaust Fan, Refrigerator, Washer, Oven/Range - Electric, Range Hood
Int. Style Ceiling Fan(s), Dining Area, Walk-in Closet(s), Wood Floors, Entry Level Bedroom, Kitchen - Table Space, Primary Bath(s), Sprinkler System

Windows Double Pane
Security Carbon Monoxide Detector(s), Main Entrance Lock, Resident Manager, Security Gate, Smoke Detector, Sprinkler System - Indoor

TV/Cable Cable TV
Garage Underground

HOA/Condo/Coop Info

Condo/Coop Fee \$610

Amenities Art Studio, Billiard Room, Club House, Common Grounds, Community Center, Elevator, Extra Storage, Fitness Center, Gated Community, Golf Course Membership Available, Jog/Walk Path, Library, Meeting Room, Party Room, Picnic Area, Pool - Indoor, Pool - Outdoor, Tennis Courts, Transportation Service

Project Name OVERLOOK AT LEIS

Information Courtesy of Weichert, REALTORS. Copyright 2021 Bright MLS. Information is believed to be accurate, but should not be relied upon without verification. Accuracy of square footage, lot size and other information is not guaranteed. This website courtesy of Barbara Ciment



CIMENT & SHIELDS TEAM

Barbara Ciment, Associate Broker



(C) 301-346-9126 (O) 301-424-0900
 barbara@ciment.com www.ciment.com





THE OVERLOOK



Enclosed Sun Room with Treetop View



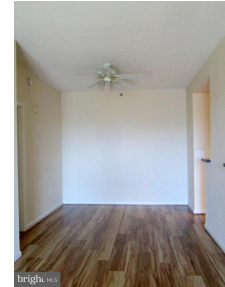
SPARKLING NEW FLOORS IN THROUGHOUT



GENEROUS OPEN LIVING ROOM



OPEN FLOOR PLAN



DINING ROOM



DINING ROOM OPEN TO LIVING ROOM



WHITE APPLIANCES IN OPEN KITCHEN



LOTS OF COUNTER SPACE



EASY ACCESS KITCHEN



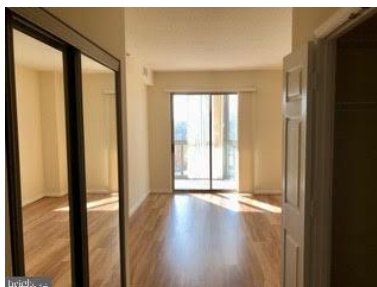
LIVING ROOM OPEN TO KITCHEN



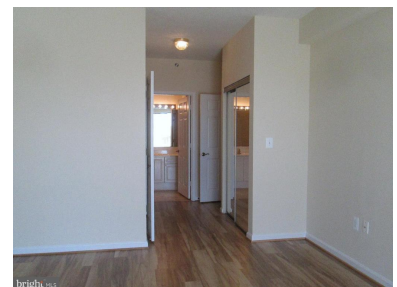
MASTER BEDROOM OPEN TO SUNROOM



NEW FLOORS IN MASTER BEDROOM



CLOSET SPACE GALORE



DRESSING AREA ADJACENT TO MASTER BEDROOM



CIMENT & SHIELDS TEAM

Barbara Ciment, Associate Broker

LONG & FOSTER REAL ESTATE

(C) 301-346-9126

(O) 301-424-0900

barbara@ciment.com

www.ciment.com





MASTER BATH WITH STEP IN SHOWER AND SEPARATE TUB



MASTER BATH WITH STEP IN SHOWER AND SEPARATE TUB



FULL SIZE TUB



GUEST BEDROOM OPEN TO SUN ROOM



Mirrored Closet Doors add lots of light



GUEST BATH WITH TUB



Generous Walk in Closet



CONVENIENT LAUNDRY AND UTILITY CLOSET



SPECTACULAR VIEWS FROM ENCLOSED SUN ROOM



Clubhouse II



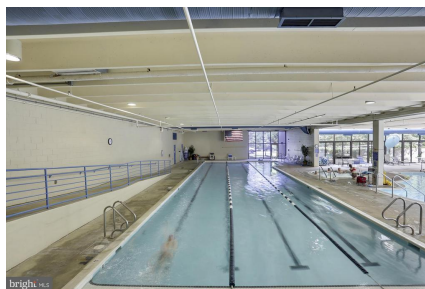
Outdoor pool



Welcome to Clubhouse



Well Equipped Fitness Center



Indoor Pool



Tennis or Pickle Ball



CIMENT & SHIELDS TEAM

Barbara Ciment, Associate Broker

LONG & FOSTER REAL ESTATE

(C) 301-346-9126

(O) 301-424-0900

barbara@ciment.com

www.ciment.com





Dining out in Leisure World



Interfaith Chapel



FOUNTAINS IN VETERANS PARK



IN MEMORY



WALKING PATHS AND SEATING SPOTS



18 Hole Golf Course



Gathering space in the clubhouse



CIMENT & SHIELDS TEAM

Barbara Ciment, Associate Broker

LONG & FOSTER REAL ESTATE

(C) 301-346-9126

(O) 301-424-0900

barbara@ciment.com

www.ciment.com

