

## Recent Home Sale: 3005 S LEISURE WORLD BLVD #707 - \$275,000



**Remarks** Lovely condo in the sought after Leisure World community boasting a spacious open floor plan and light filled interiors. Enjoy 55+ Senior living at it's best! Large living room and separate dining room adorned with plenty of natural light and gorgeous wood flooring with access to the sunroom highlighting gorgeous views. Adjacent to the living room is a den waiting for you to add your personal touch, use as an office or seating area, the possibilities are endless. Entertain family and friends in the sizable dining room just off the kitchen. Inspire your inner chef in the gorgeous eat in kitchen with table space boasting granite countertops, beautiful cabinetry, and a planning station. Retreat to the primary bedroom suite featuring plush carpeting, a walk in closet with built-ins, and an en suite with dual vanities with plenty of storage. A second bedroom, a full bath with two gorgeous chandeliers and laundry area concludes the interior of this wonderful condo. All closets are complete with built-in storage perfect for all your organizational needs. Beautiful views of the golf course from the kitchen and secondary bedroom. Enjoy two community clubhouses, two restaurants, golf course, tennis courts, indoor and outdoor pools, an on-site post office, medical center and much more! Westfield Wheaton Mall and Downtown Silver Spring offer a vast variety of shopping, dining, and entertainment options. Outdoor recreation awaits you at Northwest Branch Park and Wheaton Regional Park. Convenient commuter routes include MD-200, I-95, I-495, and US-29.

Rooms	Total	Main
Bedrooms	2	2
Full Baths	2	2
Half Baths	0	0

### Basic Information

**Address** 3005 S LEISURE WORLD BLVD #707  
**City/Town** SILVER SPRING  
**State** MD  
**Zip Code** 20906  
**County** MONTGOMERY  
**Type** Unit/Flat/Apartment

**MLS#** MDMC753442  
**Ownership** Condominium  
**Style** Contemporary  
**Adv Subdivision** LEISURE WORLD  
**DOM-Prop** 27  
**Year Built** 1999  
**Beds** 2

**Baths** 2  
**Tax Living Area** 1,466  
**Levels** 1  
**Total Fin Sq Ft** 1,466  
**Contract Date** 2021-05-11  
**Close Date** 2021-06-21  
**Close Price** \$275,000

### Exterior/Construction Features/Utilities

**Lot Desc** Landscaping  
**Exterior** Brick  
**Roof** Unknown  
**Water Type** Public  
**Sewer** Public Sewer

**Hot Water** Electric  
**Heating** Forced Air  
**Cooling** Ceiling Fan(s), Central A/C  
**Parking** Handicap Parking, Rented/Permit Required, Unassigned

**Porch/Patio** Balcony, Enclosed  
**Other** Shed  
**Other Features** Exterior Lighting, Secure Storage, Sidewalks

### Tax/Legal Information

**Tax ID #** 161303268023  
**Tax Year** 2021  
**Tax Assessment Value** \$290,000  
**Total Taxes** \$3,263

**Legal Subdiv** TURNBERRY COURTS AT LEIS  
**County Tax** \$3,050  
**Short Sale** No

**Foreclosure** No  
**REO/Bank Owned** No



**CIMENT & SHIELDS TEAM**

**Barbara Ciment, Associate Broker**



(C) 301-346-9126 (O) 301-424-0900  
 barbara@ciment.com www.ciment.com



# Recent Home Sale: 3005 S LEISURE WORLD BLVD #707 - \$275,000

## Interior Features/Amenities

**Appliances** Dishwasher, Disposal, Icemaker, Oven/Range - Electric, Refrigerator, Washer/Dryer Stacked, Water Dispenser, Water Heater

**Int. Style** Breakfast Area, Built-Ins, Carpet, Ceiling Fan(s), Combination Dining/Living, Combination Kitchen/Dining, Dining Area, Floor Plan - Open, Formal/Separate Dining Room, Kitchen - Eat-In, Kitchen - Gourmet, Kitchen - Table Space, Primary Bath(s), Sprinkler System, Upgraded Countertops, Walk-in Closet(s), Window Treatments

**Doors** Six Panel, Sliding Glass

**Windows** Double Pane, Screens

**Wall/Ceiling** Dry Wall

**Security** Main Entrance Lock, Smoke Detector, Sprinkler System - Indoor

## Rooms/Levels/Flooring

<b>Bedroom 2</b>	Main	Laminate	<b>Den</b>	Main	Laminate
<b>Dining Room</b>	Main	Laminate	<b>Foyer</b>	Main	Tile
<b>Kitchen</b>	Main	Tile	<b>Living Room</b>	Main	Laminate
<b>Primary Bedroom</b>	Main	Carpet			

## HOA/Condo/Coop Info

**Condo/Coop Fee** \$1,079

**Amenities** Club House, Common Grounds, Community Center, Elevator, Fitness Center, Jog/Walk Path, Lake, Party Room, Picnic Area, Pool - Indoor, Pool - Outdoor, Shuffleboard, Tennis Courts, Golf Course

**Project Name** TURNBERRY COURTS

Information Courtesy of Northrop Realty. Copyright 2021 Bright MLS. Information is believed to be accurate, but should not be relied upon without verification. Accuracy of square footage, lot size and other information is not guaranteed. This website courtesy of Barbara Ciment, Realtor, Long & Foster Real Estate, Inc.



**CIMENT & SHIELDS TEAM**

**Barbara Ciment, Associate Broker**

**LONG & FOSTER REAL ESTATE**

(C) 301-346-9126

(O) 301-424-0900

[barbara@ciment.com](mailto:barbara@ciment.com)

[www.ciment.com](http://www.ciment.com)





Welcome to 3005 S Leisure World Blvd!



Front Exterior



Turnberry Courts Entrance



Entrance Lobby



Living Room with Virtual Staging



Living Room



Living Room



Dining Room with Virtual Staging



Dining Room



Kitchen



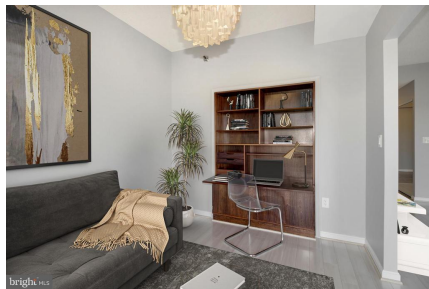
Kitchen



Kitchen



Den with Virtual Staging



Den with Virtual Staging



Primary Bedroom with Virtual Staging



**CIMENT & SHIELDS TEAM**

**Barbara Ciment, Associate Broker**

**LONG & FOSTER REAL ESTATE**

(C) 301-346-9126

(O) 301-424-0900

barbara@ciment.com

www.ciment.com





Primary Bedroom with Virtual Staging



Primary Bath



Primary Bath



Bedroom



Bedroom



Full Bath



Enclosed Sunroom



Enclosed Sunroom



Leisure World Community



Community Center



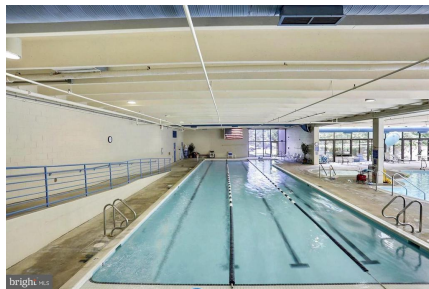
Community Center



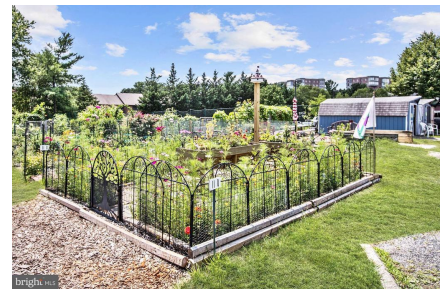
Community Tennis Courts



Community Outdoor Pool



Community Indoor Pool



Community Garden



**CIMENT & SHIELDS TEAM**

**Barbara Ciment, Associate Broker**

**LONG & FOSTER REAL ESTATE**

(C) 301-346-9126 (O) 301-424-0900  
barbara@ciment.com www.ciment.com





Community Walking Path



Community Grounds



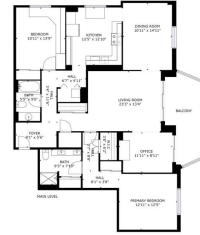
Community Sport Court



On-Site Dental Center



On-Site Medical Center



Floor Plan



**CIMENT & SHIELDS TEAM**

**Barbara Ciment, Associate Broker**

**LONG & FOSTER REAL ESTATE**

(C) 301-346-9126

(O) 301-424-0900

[barbara@ciment.com](mailto:barbara@ciment.com)

[www.ciment.com](http://www.ciment.com)

