

Recent Home Sale: 3005 S LEISURE WORLD BLVD #707 - \$302,500



Remarks 55+ Senior Community –2Bedrooms +Den and 2 Bathrooms located in desirable Turnberry Courts of Leisure World. Featuring 1,466 sq.ft. of bright and beautifully designed space. Entry foyer with coat closet and ceramic flooring. Open and inviting living room and a large den, plus a separate dining room with built-ins. Laminate wood floors and updated lighting throughout. Relax in the spacious glass-enclosed sunroom with ceramic flooring, new blinds, ceiling fan and a scenic view. Updated, table-space kitchen with a large window, new stainless refrigerator, granite countertops, decorative backsplash and under cabinet lighting. One of the best features is the layout of the bedrooms. Located on opposite sides of the condo, makes it ideal for extended guests or for a dedicated home office. The primary suite features a walk-in closet, extra closet, a linen closet, updated bathroom with double vanity, step-in shower and an extra closet. The 2nd bedroom has built-ins and a scenic golf course view. The updated 2nd bathroom has a tub/shower. Custom programmable Ecobee thermostat can be set remotely. Enjoy all the Leisure World community amenities including 18-hole golf course, 2 clubhouses, restaurants, theater, indoor and outdoor pools, library, tennis, walking paths and lots more.

Rooms	Total	Main
Bedrooms	2	2
Full Baths	2	2
Half Baths		

Basic Information

Address 3005 S LEISURE WORLD BLVD #707
City/Town SILVER SPRING
State MD
Zip Code 20906
County MONTGOMERY
Type Unit/Flat/Apartment
MLS# MDMC2052476

Ownership Condominium
Style Traditional
Model H model
Adv Subdivision LEISURE WORLD
DOM-Prop 10
Year Built 1999
Beds 2
Baths 2

Tax Living Area 1,466
Levels 1
Total Fin Sq Ft 1,466
Contract Date 2022-05-29
Close Date 2022-06-27
Close Price \$302,500

Exterior/Construction Features/Utilities

Exterior Brick
Roof Asphalt
Water Type Public

Sewer Public Sewer
Hot Water Multi-tank
Heating Central

Cooling Central A/C
Parking Unassigned

Tax/Legal Information

Tax ID # 161303268023
Tax Year 2021
Tax Assessment Value \$295,000
Total Taxes \$3,414

Legal Subdiv TURNBERRY COURTS AT LEISURE WORLD CODM
County Tax \$3,197
City/Town Taxes \$0

Short Sale No
Foreclosure No
REO/Bank Owned No

Interior Features/Amenities

Doors Six Panel, Sliding Glass
Windows Double Pane
Wall/Ceiling Dry Wall,9+ Ceilings

Security 24 hour security, Exterior Cameras, Main Entrance Lock, Resident Manager, Security Gate, Smoke Detector

TV/Cable Cable TV, Electric Available, Natural Gas Available, Phone Available, Sewer Available, Water Available



CIMENT & SHIELDS TEAM

Barbara Ciment, Associate Broker



(C) 301-346-9126 (O) 301-424-0900
barbara@ciment.com www.ciment.com



Recent Home Sale: 3005 S LEISURE WORLD BLVD #707 - \$302,500

Rooms/Levels/Flooring

Bedroom 1	Main	Bedroom 2	Main
Den	Main	Dining Room	Main
Kitchen	Main	Living Room	Main
Sun/Florida Room	Main		

HOA/Condo/Coop Info

HOA Fee \$0

Condo/Coop Fee \$1,199

Amenities Art Studio, Bank / Banking On-site, Bar/Lounge, Billiard Room, Club House, Common Grounds, Community Center, Elevator, Extra Storage, Fitness Center, Game Room, Gated Community, Golf Course, Golf Course Membership Available, Jog/Walk Path, Library, Meeting Room, Newspaper Service, Party Room, Picnic Area, Pool - Indoor, Pool - Outdoor, Pool Mem Avail, Security, Storage Bin, Swimming Pool, Tennis Courts, Transportation Service

Project Name TURNBERRY COURTS

Information Courtesy of Weichert, REALTORS. Copyright 2021 Bright MLS. Information is believed to be accurate, but should not be relied upon without verification. Accuracy of square footage, lot size and other information is not guaranteed. This website courtesy of Barbara Ciment, Realtor, Long & Foster Real Estate, Inc.



CIMENT & SHIELDS TEAM

Barbara Ciment, Associate Broker

LONG & FOSTER
REALTOR® REAL ESTATE

(C) 301-346-9126

(O) 301-424-0900

barbara@ciment.com

www.ciment.com





Turnberry Courts Exterior



Turnberry Courts



Entry foyer with coat closet



Light and bright living room



Living room, view 2



Living room, view 3



Living room, view 4



Large sunroom with treed view



Sunroom has ceramic flooring



Dining room with built-ins



Dining room, view 2



Spacious den with ceiling fan



Den, view 2



Table-space kitchen with window



Kitchen, view 2



CIMENT & SHIELDS TEAM

Barbara Ciment, Associate Broker

LONG & FOSTER REAL ESTATE

(C) 301-346-9126 (O) 301-424-0900
barbara@ciment.com www.ciment.com





Kitchen, view 3



Scenic view from kitchen window



Primary bedroom with ceiling fan



Primary bedroom, view 2



Primary bathroom with double sinks



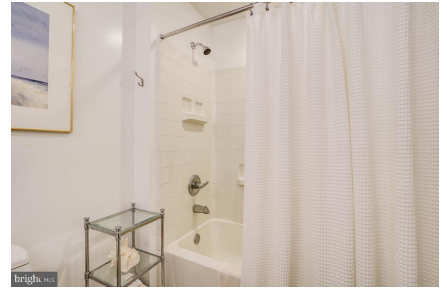
Second bedroom with built-ins



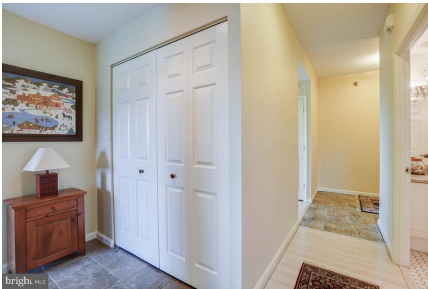
Second bedroom, view 2



Hall bathroom with updates



Hall bath has tub/shower



Laundry closet



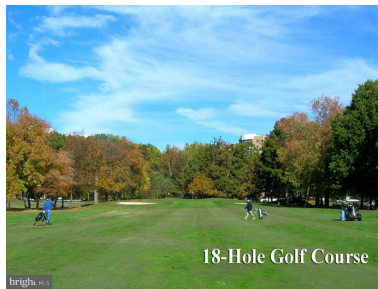
Laundry closet in hallway



Building lobby



Community Clubhouse I



Community 18-hole golf course



Community Clubhouse II



CIMENT & SHIELDS TEAM

Barbara Ciment, Associate Broker

LONG & FOSTER REAL ESTATE

(C) 301-346-9126

(O) 301-424-0900

barbara@ciment.com

www.ciment.com





Community fitness center



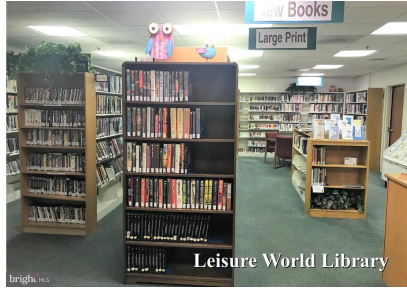
Community indoor pool



Community outdoor pool



Community tennis courts



Community library



Community Medical Center



Community bus service



CIMENT & SHIELDS TEAM

Barbara Ciment, Associate Broker

LONG & FOSTER REAL ESTATE

(C) 301-346-9126 (O) 301-424-0900
barbara@ciment.com www.ciment.com

