



Remarks

Rooms	Total
Bedrooms	
Full Baths	
Half Baths	

Basic Information

Lot Size 0

Acres 0

Tax Living Area 0

Tax/Legal Information

Tax ID #

Foreclosure No

Short Sale No

REO/Bank Owned No

Information Courtesy of . Copyright 2021 Bright MLS. Information is believed to be accurate, but should not be relied upon without verification. Accuracy of square footage, lot size and other information is not guaranteed. This website courtesy of Barbara Ciment, Realtor, Long & Foster Real Estate, Inc.



Barbara Ciment, Associate Broker



(C) 301-346-9126

(O) 301-424-0900

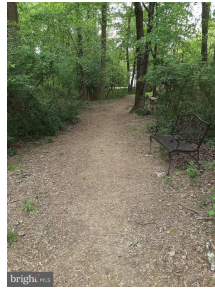
barbara@ciment.com

www.ciment.com

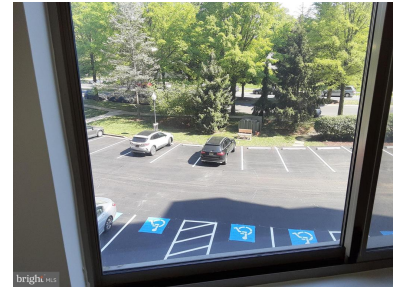




Building entrance. 8 story elevator bldg.



Nature park at Turnberry Courts



View from 2nd bedroom



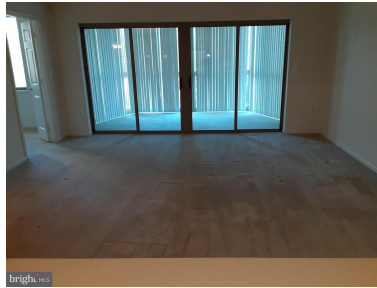
Primary Bedroom includes wall & walk-in closet



Kitchen, view from foyer



Dining area, 10'x10'



Living room (16'x16') opens to sunroom.



Bedroom 2,



Washer & Dryer, with extra shelving.



Building Community Room.



Building library in community room



Extra storage (cage) on main level of building.



Building lobby



Turnberry Courts entrance closest to 3005



CIMENT & SHIELDS TEAM

Barbara Ciment, Associate Broker

LONG & FOSTER REAL ESTATE

(C) 301-346-9126

(O) 301-424-0900

barbara@ciment.com

www.ciment.com

