

## Recent Home Sale: 15115 INTERLACHEN DR #3-916 - \$129,000



**Remarks** FABULOUS, SPACIOUS AND LIGHT-FILLED 850 sq. ft+ ONE BEDROOM/ONE FULL BATH UNIT IN THE SOUGHT AFTER "GREENS AT LEISURE WORLD! EXCEPTIONALLY MAINTAINED W/ SOME UPGRADES. GORGEOUS AND EXPANSIVE TREE TOP VIEWS FROM ALL POINTS! STUNNING AFTERNOON SUNSETS! NATURAL LIGHT ABUNDANTLY FILLS THIS TRULY BEAUTIFUL AND SPACIOUS 850 SQ. FT. UNIT. GLEAMING HARDWOODS, LARGE EAT-IN KITCHEN, LOADS OF CLOSET, LARGE BATH W/ SIT DOWN VANITY AND A STUNNING SUN ROOM MAKE THIS A SPECIAL UNIT! CLOSE TO ELEVATORS TOO! SPECTACULAR AND AFFORDABLE PRIVATE 55+ GATED COMMUNITY OF LEISURE WORLD BOASTS LOADS OF AMENITIES! LOW FEES INCLUDE MOST UTILITIES , INCLUDING CABLE/INTERNET (ELECTRIC SEPARATE) SECURITY, CLUB HOUSE, POOL, GYM, HEALTH CENTER, LOADS OF GREEN SPACE & WALKING TRAILS, GOLF COURSE AND AMPLE TRANSPORTATION TO RESIDENTS! TONS OF ACTIVITIES FOR RESIDENTS AS WELL! NEARBY FULL SERVICE SHOPPING CENTER - THIS IS A PLACE TO CALL HOME!

Rooms	Total	Main
Bedrooms	1	1
Full Baths	1	1
Half Baths		

### Basic Information

**Address** 15115 INTERLACHEN DR #3-916  
**City/Town** SILVER SPRING  
**State** MD  
**Zip Code** 20906  
**County** MONTGOMERY  
**Type** Unit/Flat/Apartment  
**MLS#** MDMC740602

**Ownership** Condominium  
**Style** Contemporary  
**Adv Subdivision** GREENS AT LEISURE WORLD  
**DOM-Prop** 35  
**Year Built** 1984  
**Beds** 1

**Baths** 1  
**Tax Living Area** 850  
**Levels** 1  
**Total Fin Sq Ft** 850  
**Contract Date** 2021-02-14  
**Close Date** 2021-03-12  
**Close Price** \$129,000

### Exterior/Construction Features/Utilities

**Exterior** Concrete, Mixed  
**Roof** Unknown  
**Water Type** Public  
**Sewer** Public Sewer

**Hot Water** Other  
**Heating** Heat Pump(s)  
**Cooling** Heat Pump(s)  
**Parking** Handicap Parking, Parking Space  
 Conveys, Private

**Other Features** Extensive Hardscape, Exterior Lighting, Sidewalks, Street Lights

### Tax/Legal Information

**Tax ID #** 161302683616  
**Tax Year** 2021  
**Tax Assessment Value** \$115,000

**Total Taxes** \$1,169  
**Legal Subdiv** GREENS AT LEISURE WORLD  
**County Tax** \$1,121

**Short Sale** No  
**Foreclosure** No  
**REO/Bank Owned** No

### Interior Features/Amenities

**Appliances** Built-In Microwave, Dishwasher, Disposal, Dryer - Front Loading, Dryer - Electric, Exhaust Fan, Oven/Range - Electric, Refrigerator, Washer - Front Loading  
**Int. Style** Ceiling Fan(s), Combination Dining/Living, Floor Plan - Traditional, Kitchen - Eat-In, Kitchen - Table Space, Walk-in Closet(s), Window Treatments, Wood Floors

**Doors** Sliding Glass, Insulated  
**Windows** Atrium, Insulated, Low-E, Sliding  
**Wall/Ceiling** Dry Wall  
**Security** Exterior Cameras, Fire Detection System, Smoke Detector, Sprinkler System - Indoor, Surveillance Sys, Security Gate

**TV/Cable** Electric Available



**CIMENT & SHIELDS TEAM**

**Barbara Ciment, Associate Broker**



**(C) 301-346-9126 (O) 301-424-0900**  
**barbara@ciment.com www.ciment.com**



## Recent Home Sale: 15115 INTERLACHEN DR #3-916 - \$129,000

### HOA/Condo/Coop Info

**Condo/Coop Fee** \$631

**Amenities** Common Grounds, Elevator, Extra Storage, Golf Course Membership Available, Fitness Center, Cable, Jog/Walk Path, Pool - Indoor, Transportation Service

**Project Name** GREENS AT LEISURE WORLD 2

Information Courtesy of Compass. Copyright 2021 Bright MLS. Information is believed to be accurate, but should not be relied upon without verification. Accuracy of square footage, lot size and other information is not guaranteed. This website courtesy of Barbara Ciment, Realtor, Long & Foster Real Estate, Inc.



**CIMENT  
& SHIELDS** TEAM

**Barbara Ciment, Associate Broker**

**LONG & FOSTER**  
REALTOR® REAL ESTATE

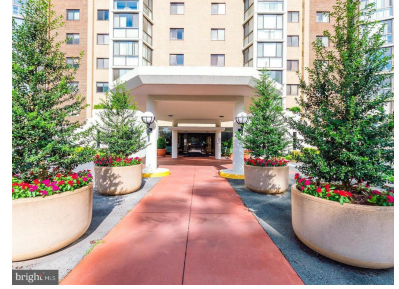
(C) 301-346-9126

(O) 301-424-0900

[barbara@ciment.com](mailto:barbara@ciment.com)

[www.ciment.com](http://www.ciment.com)





**CIMENT & SHIELDS TEAM**

**Barbara Ciment, Associate Broker**

**LONG & FOSTER REAL ESTATE**

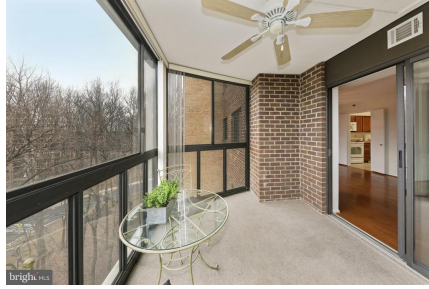
**(C) 301-346-9126**

**(O) 301-424-0900**

**barbara@ciment.com**

**www.ciment.com**

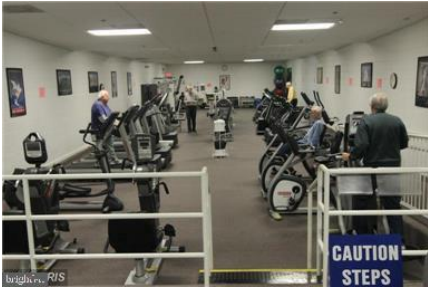




**CIMENT & SHIELDS TEAM**

**Barbara Ciment, Associate Broker**  
**LONG & FOSTER REAL ESTATE**  
EQUAL HOUSING OPPORTUNITY  
(C) 301-346-9126 (O) 301-424-0900  
barbara@ciment.com www.ciment.com





 **CIMENT & SHIELDS TEAM** 

**Barbara Ciment, Associate Broker**  
**LONG & FOSTER REAL ESTATE**   
(C) 301-346-9126 (O) 301-424-0900  
[barbara@ciment.com](mailto:barbara@ciment.com) [www.ciment.com](http://www.ciment.com)

