

# Recent Home Sale: 15115 INTERLACHEN DR #3-1004 - \$239,000



**Remarks** 1400+ Sq. Ft of living space in this 55+ Gated Community with tons of amenities! Offering 2 Bedrooms, both with their own private full bath, Large Family Room, Kitchen with separate dining area, home office, and gorgeous sunroom with beautiful views! Washer and Dryer in unit. Enjoy the multitude of amenities this community offers such as Club House, Pool, Gym, Health Center, Walking Paths, Golf Courses, Garden Space, Security Guards at two entrance areas, and shuttle buses to Leisure World Shopping Center! This unit also comes with one assigned storage area as well as an assigned parking area.

Rooms	Total	Main
Bedrooms	2	2
Full Baths	2	2
Half Baths		

## Basic Information

**Address** 15115 INTERLACHEN DR #3-1004  
**City/Town** SILVER SPRING  
**State** MD  
**Zip Code** 20906  
**County** MONTGOMERY  
**Type** Unit/Flat/Apartment  
**MLS#** MDMC738804  
**Ownership** Condominium

**Style** Unit/Flat  
**Adv Subdivision** GREENS AT LEISURE WORLD  
**DOM-Prop** 49  
**Year Built** 1984  
**Beds** 2  
**Baths** 2  
**Tax Living Area** 1,480

**Levels** 1  
**Total Fin Sq Ft** 1,480  
**Contract Date** 2021-02-15  
**Close Date** 2021-03-10  
**Close Price** \$239,000  
**Seller Subsidy** \$5,780

## Exterior/Construction Features/Utilities

**Exterior** Brick  
**Water Type** Public  
**Sewer** Public Sewer

**Hot Water** Electric  
**Heating** Heat Pump(s)  
**Cooling** Central A/C

**Garage Spaces** 1.00  
**Parking** Assigned  
**# Spaces** 1

## Tax/Legal Information

**Tax ID #** 161302683742  
**Tax Year** 2021  
**Tax Assessment Value** \$265,000

**Total Taxes** \$2,823  
**Legal Subdiv** GREENS AT LEISURE WORLD  
**County Tax** \$2,775

**Short Sale** No  
**Foreclosure** No  
**REO/Bank Owned** No

## Interior Features/Amenities

**Appliances** Built-In Microwave, Disposal, Dishwasher, Dryer, Extra Refrigerator/Freezer, Oven/Range - Electric, Refrigerator, Washer

**Int. Style** Breakfast Area, Built-Ins, Carpet, Ceiling Fan(s), Dining Area, Entry Level Bedroom, Family Room Off Kitchen, Floor Plan - Traditional, Primary Bath(s), Recessed Lighting, Sprinkler System, Walk-in Closet(s)

**Security** Sprinkler System - Indoor  
**Garage** Other

## Rooms/Levels/Flooring

<b>Bathroom 2</b>	Main		<b>Bedroom 2</b>	Main	
<b>Dining Room</b>	Main	Carpet	<b>Family Room</b>	Main	Carpet
<b>Foyer</b>	Main	Carpet	<b>Kitchen</b>	Main	
<b>Office</b>	Main	Carpet	<b>Primary Bedroom</b>	Main	Carpet
<b>Sun/Florida Room</b>	Main				



**CIMENT & SHIELDS TEAM**

**Barbara Ciment, Associate Broker**

**LONG & FOSTER REAL ESTATE**

(C) 301-346-9126 (O) 301-424-0900  
 barbara@ciment.com www.ciment.com



# Recent Home Sale: 15115 INTERLACHEN DR #3-1004 - \$239,000

## HOA/Condo/Coop Info

**Condo/Coop Fee** \$898

**Amenities** Bank / Banking On-site, Billiard Room, Club House, Common Grounds, Extra Storage, Fitness Center, Game Room, Gated Community, Golf Course, Golf Course Membership Available, Jog/Walk Path, Library, Party Room, Picnic Area, Pool - Indoor, Pool - Outdoor, Security, Storage Bin, Tennis Courts, Transportation Service

**Project Name** GREENS AT LEISUR

Information Courtesy of RE/MAX 1st Realty. Copyright 2021 Bright MLS. Information is believed to be accurate, but should not be relied upon without verification. Accuracy of square footage, lot size and other information is not guaranteed. This website courtesy of Barbara Ciment, Realtor, Long & Foster Real Estate, Inc.



**CIMENT & SHIELDS TEAM**

**Barbara Ciment, Associate Broker**

**LONG & FOSTER**  
REALTOR® REAL ESTATE

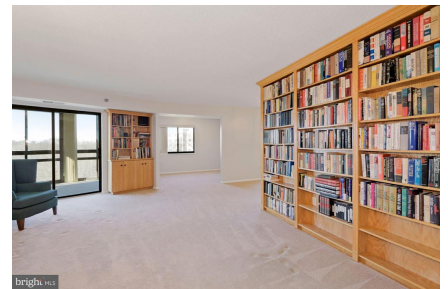
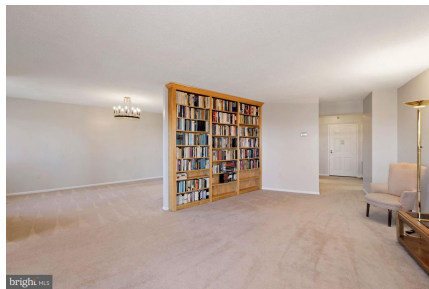
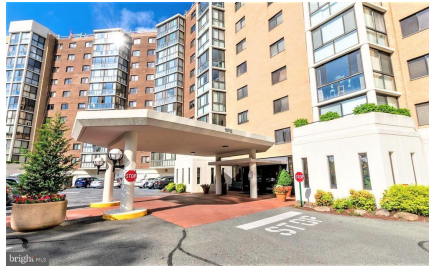
(C) 301-346-9126

(O) 301-424-0900

[barbara@ciment.com](mailto:barbara@ciment.com)

[www.ciment.com](http://www.ciment.com)





**CIMENT & SHIELDS TEAM**

**Barbara Ciment, Associate Broker**

**LONG & FOSTER REAL ESTATE**

(C) 301-346-9126

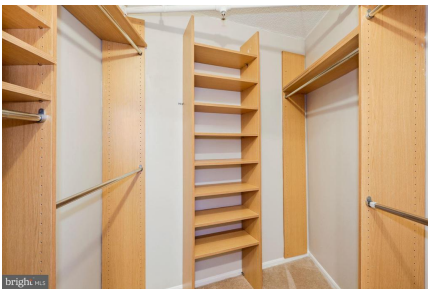
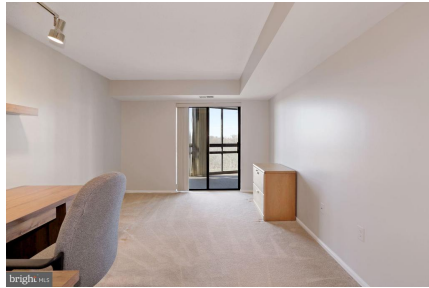
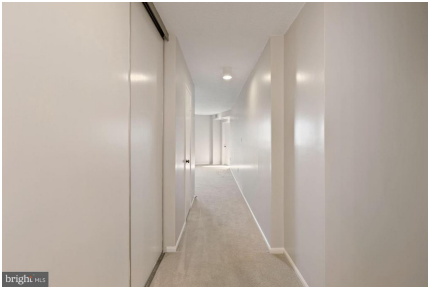
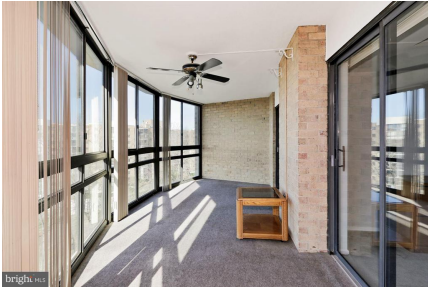
(O) 301-424-0900

[barbara@ciment.com](mailto:barbara@ciment.com)

[www.ciment.com](http://www.ciment.com)







**CIMENT & SHIELDS TEAM**

**Barbara Ciment, Associate Broker**

**LONG & FOSTER REAL ESTATE**

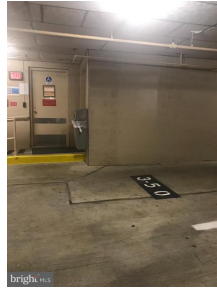
(C) 301-346-9126

(O) 301-424-0900

[barbara@ciment.com](mailto:barbara@ciment.com)

[www.ciment.com](http://www.ciment.com)





**CIMENT & SHIELDS TEAM**

**Barbara Ciment, Associate Broker**

**LONG & FOSTER REAL ESTATE**

(C) 301-346-9126 (O) 301-424-0900  
barbara@ciment.com www.ciment.com

