

Recent Home Sale: 15107 INTERLACHEN DR #2-719 - \$169,000



Remarks Enjoy all the amenities and conveniences in this active 55 and older community. Charming two bedroom condo located steps from the golf course ! Roomy kitchen with new back splash, pantry, and ample counter space! New carpet in the balcony sunroom with a scenic view! Amenities include: two clubhouses, three recently renovated restaurants and a redesigned ballroom. Indoor and outdoor pools, tennis courts, walking trails, and an 18-hole championship golf course, a new and improved fitness center. The new 5,400-square-foot fitness facility features state-of-the-art equipment and golf course views. Close proximity to the ICC!

| Rooms | Total | Main |
|------------|-------|------|
| Bedrooms | 2 | 2 |
| Full Baths | 1 | 1 |
| Half Baths | 1 | 1 |

Basic Information

Address 15107 INTERLACHEN DR #2-719
City/Town SILVER SPRING
State MD
Zip Code 20906
County MONTGOMERY
Type Unit/Flat/Apartment
MLS# MDMC2023280

Ownership Fee Simple
Style Traditional
Adv Subdivision LEISURE WORLD
DOM-Prop 18
Year Built 1984
Beds 2
Baths 1/1

Tax Living Area 950
Levels 1
Total Fin Sq Ft 950
Contract Date 2021-12-02
Close Date 2021-12-30
Close Price \$169,000

Exterior/Construction Features/Utilities

Exterior Brick
Water Type Public

Sewer Public Sewer
Hot Water Natural Gas

Heating Forced Air
Cooling Heat Pump(s)

Tax/Legal Information

Tax ID # 161302478330
Tax Year 2021
Tax Assessment Value \$130,000
Total Taxes \$1,485

Legal Subdiv THE GRNS AT LEISURE WRLD
County Tax \$1,433
City/Town Taxes \$0
Short Sale No
Foreclosure No
REO/Bank Owned No

HOA/Condo/Coop Info

Condo/Coop Fee \$630

Information Courtesy of Town Center Realty & Associates, Inc. Copyright 2021 Bright MLS. Information is believed to be accurate, but should not be relied upon without verification. Accuracy of square footage, lot size and other information is not guaranteed. This website courtesy of Barbara Ciment, Realtor, Long & Foster Real Estate, Inc.



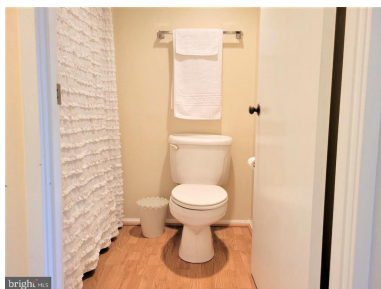
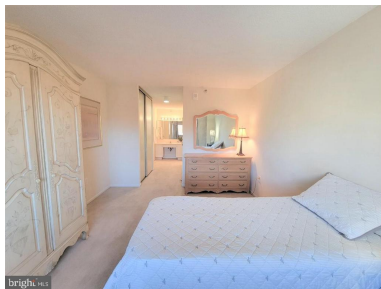
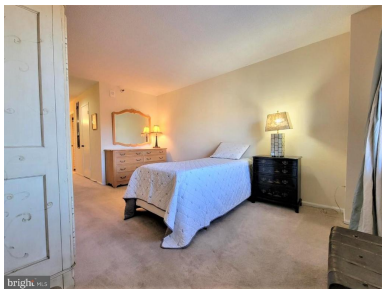
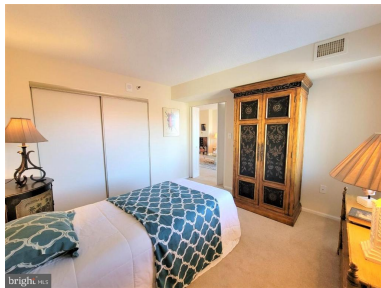
CIMENT & SHIELDS TEAM

Barbara Ciment, Associate Broker

LONG & FOSTER REAL ESTATE

(C) 301-346-9126 (O) 301-424-0900
barbara@ciment.com www.ciment.com





CIMENT & SHIELDS TEAM

Barbara Ciment, Associate Broker

LONG & FOSTER REAL ESTATE

(C) 301-346-9126

(O) 301-424-0900

barbara@ciment.com

www.ciment.com





CIMENT
& **SHIELDS** TEAM

Barbara Ciment, Associate Broker

LONG & FOSTER
REALTOR® REAL ESTATE

(C) 301-346-9126

(O) 301-424-0900

barbara@ciment.com

www.ciment.com

